



STATE ENVIRONMENTAL  
FUND OF THE  
CZECH REPUBLIC

# ANNUAL REPORT **2015**

STATE ENVIRONMENTAL  
FUND OF THE  
CZECH REPUBLIC

# CONTENT

A Word of Introduction.....	2
01 / SEF CR HELPS ENHANCE THE ENVIRONMENT .....	3
02 / SUBSIDY PROGRAMMES ADMINISTERED BY THE FUND .....	5
Operational Programme Environment 2014–2020 .....	7
Operational Programme Environment 2007–2013 .....	9
National Programmes .....	11
National Programme Environment.....	13
New Green Savings Programme – New GIS .....	14
Other Administered Programmes .....	15
03 / FUND MANAGEMENT .....	16
Economic Information.....	17
SEF CR Revenues .....	18
SEF CR Expenditure .....	19
SEF CR Assets .....	21
Auditor’s Report .....	22
04 / HUMAN RESOURCES AT SEF CR .....	23
SEF CR Management .....	24
Professional Development of SEF CR Employees.....	24
Organisational Structure of SEF CR .....	25
05 / TRADE UNION ORGANISATIONS .....	26
06 / FUND COUNCIL.....	27
07 / PROVISION OF INFORMATION .....	28
08 / CONTACT DETAILS .....	30
LIST OF ABBREVIATIONS .....	31

## A WORD OF INTRODUCTION



*I am pleased that I can say that last year was successful for us. In fact, it was a very successful year with regard to the size of the task that lay ahead of us, because 2015 was the last opportunity we had to use European subsidies from the 2007–2013 programming period. There was still more than CZK 35 billion available. The work performance of all Fund employees reached almost fever pitch, thanks to which and thanks to the optimisation and acceleration measures adopted, we managed to send all the remaining funds to the bank accounts of subsidy beneficiaries.*

*Even though the individual operational programmes are not intended to compete with each other, I think that we can at least boast that the Operational Programme Environment for the new 2014–2020 programming period was only the second programme to be approved by the European Commission. Thanks to that, we could offer the first CZK 9 billion from the new programming period to the applicants by the middle of the year.*

*The success of the “boiler subsidies”, co-funded from EU sources, also merits admiration. In co-operation with the individual regions, we were able to offer CZK 3 billion to citizens to replace their old fossil fuel-fired boilers for other, more environmentally friendly ones. However, interest exceeded the funds available.*

*But the State Environmental Fund of the Czech Republic does not only mean EU subsidies. The New Green Savings programme is also popular with the public. Last year, it underwent several changes with an aim to making the programme’s requirements easier to meet and to widen the range of subsidy applicants. Owners of single-family houses and apartment blocks can thus look forward to simpler calculations and quicker administration of their aid applications.*

*Lastly, I would like to remind you of the approval of the National Programme Environment, which gives smaller towns and municipalities that cannot access European subsidies a chance. Now they too can implement their environmental projects thanks to this programme.*

*I have already mentioned the dedication of all of the employees of the State Environmental Fund of the Czech Republic. I would like to use this opportunity to thank them, because without such a high-quality team of people we would scarcely have met the objectives that we had originally set ourselves.*

**Ing. Petr Valdman**  
SEF CR Director

## 01 / SEF CR HELPS ENHANCE THE ENVIRONMENT



The Fund has been  
helping to invest  
into the environment  
since

**1992**

## 01 / SEF CR HELPS ENHANCE THE ENVIRONMENT

The State Environmental Fund of the Czech Republic (the "SEF CR" or the "Fund") is a specifically focused institution that was incorporated by Act No. 388/1991 Coll. It provides direct financial support through subsidies and indirect financial support through loans or contributions towards interest on loans.

Since 1992, the Fund has shared substantially in investment in the protection and enhancement of the environment. It primarily co-finances projects aimed at water protection, improvement of air quality, use of renewable energy sources, waste management, protection of nature and conservation of landscape and at environmental education.

The Fund's main activities include consultancy and advisory activities, acceptance of applications for aid and support and evaluation thereof, drafting of proposals for SEF CR Council (the "Fund Council") meetings and minister's decisions, as well as the contractual agenda for providing aid and support, agenda for contractual guarantees for the loans granted, release of funds to aid beneficiaries, including the continuous monitoring of the purpose of the use of the funds, final evaluation of the use of the funds provided and the environmental effects achieved, the monitoring of the rate of return on loans until full settlement of obligations and any imposition and collection of penalties in the event of any failure to observe contractual terms and conditions for the provision of support.

## 02 / SUBSIDY PROGRAMMES ADMINISTERED BY THE FUND



The Operational  
Programme Environment  
2007–2013 supported  
almost

**20 000**  
projects

## 02 / SUBSIDY PROGRAMMES ADMINISTERED BY THE FUND

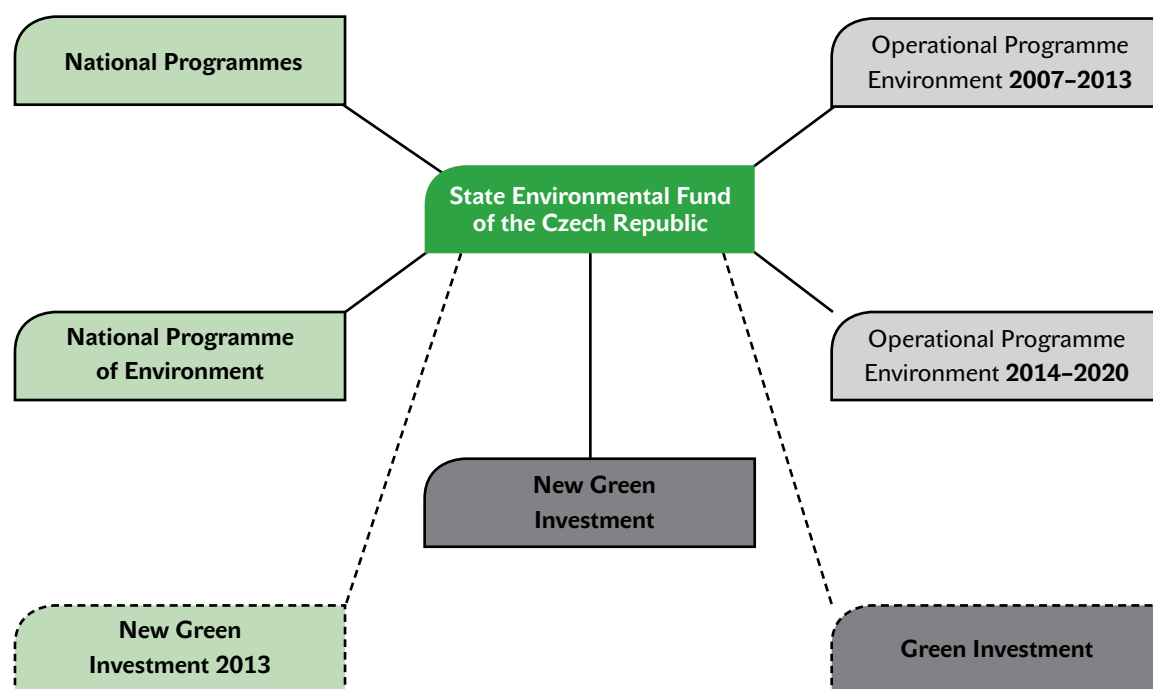
The State Environmental Fund of the Czech Republic grants subsidies to applicants from several subsidy programmes (see the chart). The programmes differ both in the sources of financing and in the target group.

In 2015, the Fund granted subsidies to applicants from the following subsidy programmes: Operational Programme Environment 2007–2013, Operational Programme Environment 2014–2020, New Green Savings programme (New GIS), National Programme Environment and national programmes.

It also administered projects of the programmes that have not been closed yet, but no longer grant aid for new projects: New Green Savings programme 2013 (New GIS 2013) and Green Savings programme (GIS).

The financing of the ISPA/Cohesion Fund programme ended last year with the Fund paying CZK 190,000 to the last project within this programme.

### Overview of the administered programmes and sources of financing



national sources, i.e. state budget, SEF CR revenues

sale of unused AAUs

EU sources (Cohesion Fund, European Regional Development Fund)

— programmes the subsidies of which could be applied for in 2015

---- programmes the subsidies of which couldn't be applied for in 2015 (other administered programmes)

## 02 / SUBSIDY PROGRAMMES ADMINISTERED BY THE FUND

### OPERATIONAL PROGRAMME ENVIRONMENT 2014–2020

The Operational Programme Environment 2014–2020 follows on the Operational Programme Environment 2007–2013. It offers EUR 2.637 billion to the Czech Republic from the European Regional Development Fund and from the Cohesion Fund.

The European Commission approved the programme document for the Operational Programme Environment 2014–2020 on 30 April 2015. The Ministry of the Environment of the Czech Republic is the managing authority of the programme; the State Environmental Fund of the Czech Republic is the intermediate body for all priority axes (except for Priority Axis 4 where the Nature Conservation Agency of the Czech Republic also acts as the intermediate body).

Several changes were made in the programme compared to the previous programming period. First and foremost, the total amount of programme funds was decreased as well as the number of supported activities (priority axes). Changes were also introduced in the priorities of the individual axes. New terminology is also worth mentioning with regard to other modifications.

A total of 26 calls for submission of applications for aid were announced within the OPE 2014–2020 in 2015. A list of the calls is provided below. The approval procedure took place in 2016, i.e. no application for subsidy was approved at the end of 2015.

#### The programme grants aid to specific projects in six areas:

Priority Axis 1 – Improving water quality and reducing flood risks

Priority Axis 2 – Improving air quality in human settlements

Priority Axis 3 – Waste management and material flows, environmental burden and risks

Priority Axis 4 – Protection and care for nature and landscape

Priority Axis 5 – Energy savings

Priority Axis 6 – Technical assistance



## 02 / SUBSIDY PROGRAMMES ADMINISTERED BY THE FUND

### OPERATIONAL PROGRAMME ENVIRONMENT 2014–2020

#### List of OPE 2014–2020 Calls in 2015

Call No.	Priority axis (PO), specific objective (SC)	Acceptance of applications	Number of appli- cations received	Total eligible expenditure	EU contribution	National co-financing
05_15_001	PO1, SC 1.1, ongoing	14. 8. – 13. 11. 2015	10	385 516 101	323 798 723	61 717 378
05_15_002	PO1, SC 1.2, ongoing	14. 8. – 13. 11. 2015	1	15 012 598	12 760 708	2 251 890
05_15_003	PO1, SC 1.3, round	14. 8. – 13. 11. 2015	24	440 853 815	374 725 743	66 128 072
05_15_004	PO1, SC 1.4, round	14. 8. – 13. 11. 2015	137	539 095 236	384 224 285	154 870 951
05_15_005	PO3, SC 3.2, round	14. 8. – 13. 11. 2015	465	2 066 698 485	1 726 020 640	340 677 845
05_15_006	PO3, SC 3.4	14. 8. 2015 – 15. 1. 2016	0	0	0	0
05_15_007	PO3, SC 3.4, round	14. 8. – 13. 11. 2015	46	1 272 856 427	1 070 646 949	202 209 478
05_15_008	PO2, SC 2.2, round	14. 8. – 16. 12. 2015	240	10 227 194 926	5 531 423 708	4 691 228 013
05_15_009	PO4, SC 4.1, ongoing	14. 8. 2015 – 6. 1. 2017	1	104 218 598	104 218 598	0
05_15_010	PO4, SC 4.1, round	14. 8. – 14. 10. 2015	10	49 466 061	42 046 152	7 419 909
05_15_011	PO4, SC 4.2, round	14. 8. – 14. 10. 2015	9	23 513 490	19 986 466	3 527 023
05_15_012	PO4, SC 4.3, round	14. 8. – 14. 10. 2015	89	258 014 981	188 055 043	69 959 938
05_15_013	PO 4, SC 4.3	14. 8. 2015 – 31. 12. 2016	0	0	0	0
05_15_014	PO 4, SC 4.3	14. 8. 2015 – 6. 1. 2017	0	0	0	0
05_15_015	PO4, SC 4.4, round	14. 8. – 14. 10. 2015	93	241 383 695	144 830 217	96 553 478
05_15_016	PO2, SC 2.1, ongoing	14. 8. – 30. 9. 2015	14	2 999 400 000	2 999 400 000	0
05_15_017	PO 2, SC 2.1	15. 10. 2015 – 14. 10. 2016	0	0	0	0
05_15_018	PO3, SC 3.5, ongoing	15. 10. 2015 – 14. 10. 2016	2	54 930 828	46 691 204	8 239 624
05_15_019	PO5, SC 5.1, round	1. 12. 2015 – 15. 4. 2016	5	6 509 741	2 637 075	3 872 666
05_15_020	PO 5, SC 5.2	15. 10. 2015 – 14. 10. 2016	0	0	0	0
05_15_021	PO1, SC 1.1, round	15. 10. 2015 – 5. 1. 2016	54	1 967 252 296	1 672 164 452	295 087 845
05_15_022	PO1, SC 1.2, round	15. 10. 2015 – 5. 1. 2016	10	310 401 662	263 841 413	46 560 249
05_15_023	PO3, SC 3.2, round	15. 10. 2015 – 5. 1. 2016	1	11 800 000	9 440 000	2 360 000
05_15_024	PO3, SC 3.3, round	15. 10. 2015 – 5. 1. 2016	2	52 966 185	45 021 257	7 944 928
05_15_025	PO6, SC 6.1, ongoing	1. 11. 2015 – 31. 12. 2023	3	158 726 400	134 917 440	23 808 960
05_15_026	PO6, SC 6.2, ongoing	1. 11. 2015 – 31. 12. 2023	0	0	0	0
<b>Sum total</b>			<b>1 216</b>	<b>21 185 811 524</b>	<b>15 096 850 071</b>	<b>6 084 418 248</b>

## 02 / SUBSIDY PROGRAMMES ADMINISTERED BY THE FUND

### OPERATIONAL PROGRAMME ENVIRONMENT 2007–2013

In 2015, the last three calls for applications for aid were announced as part of the Operational Programme Environment 2007–2013, i.e. Calls Nos. LXIV–LXVI for Priority Axes 3, 4, 6 and 7. The administration and disbursement of the previously approved applications was pursued intensively. A total of 19,941 projects with a volume of approved aid from the EU funds of almost CZK 130 billion have been approved for co-financing since the start of the programme.

The OPE 2007–2013 also supported large projects with total costs exceeding EUR 50 million. Such projects are subject to approval by the European Commission based on the recommendations from the national managing authority, i. e. the Ministry of the Environment of the Czech Republic.

A total of twenty applications for aid have been submitted in the category of large projects since the launch of the OPE; with one project within Priority Axis 3, six projects within Priority Axis 4 and other projects within Priority Axis 1. As at 31 December 2015, the European Commission had approved eight large projects, including six projects within Priority Axis 1 and two projects within Priority Axis 4.

The highest volume of grant funding (CZK 50.2 billion) was approved in Priority Axis 1 which focused on the improvement of the water management infrastructure and reduction of risk of floods. The lowest amount of funds was approved for applicants in Priority Axis 5.

#### Volume of Approved Aid within OPE 2007–2013 by Priority Axes (as at 31 December 2015, CZK)

Priority axis	Number of projects	Total costs	Total eligible expenditure	Support from ERDF/CF	Support from SEF CR/SB	Total amount of support
1	1 458	80 564 165 638	67 294 603 229	47 393 550 801	2 816 506 715	50 210 057 516
2	2 476	38 226 408 444	29 531 255 665	16 901 156 574	1 337 719 763	18 238 876 336
3	6 069	48 052 815 753	29 564 138 188	24 565 633 737	1 382 107 079	25 947 740 816
4	4 249	30 309 650 205	25 690 657 831	19 699 627 170	1 489 781 079	21 189 408 249
5	172	3 655 593 108	2 808 218 994	1 487 903 247	92 057 809	1 579 961 056
6	4 503	17 928 785 651	16 473 441 576	13 510 247 761	1 075 705 908	14 585 953 670
7	619	2 260 894 877	2 120 719 361	1 772 707 614	122 889 088	1 895 596 702
8	395	4 797 435 129	3 017 258 921	2 564 009 805	249 030 304	2 813 040 109
<b>Total number</b>	<b>19 941</b>	<b>225 795 748 805</b>	<b>176 500 293 764</b>	<b>127 894 836 708</b>	<b>8 565 797 745</b>	<b>136 460 634 454</b>

*Priority Axis 1 – Improving the water management infrastructure and reducing the risk of floods*

*Priority Axis 2 – Improving air quality and reducing emissions*

*Priority Axis 3 – Sustainable use of energy sources*

*Priority Axis 4 – Quality enhancement of waste management and removal old ecological burdens*

*Priority Axis 5 – Reduction of industrial pollution and environmental risks*

*Priority Axis 6 – Improving the condition of nature and the landscape*

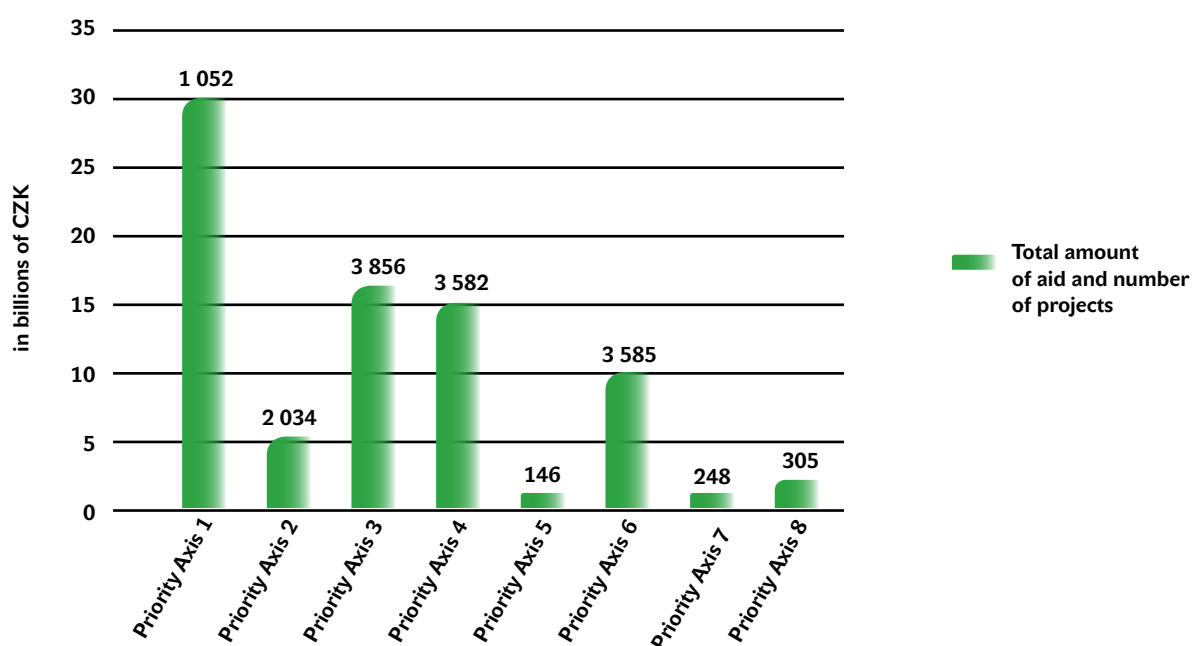
*Priority Axis 7 – Development of infrastructure for environmental education, consultancy and awareness*

*Priority Axis 8 – Technical assistance financed from the Cohesion Fund*

## 02 / SUBSIDY PROGRAMMES ADMINISTERED BY THE FUND

### OPERATIONAL PROGRAMME ENVIRONMENT 2007–2013

#### Projects Completed in Individual Priority Axes



By the end of 2015, a total of 14,808 projects with an aggregate sum of aid exceeding CZK 84.2 billion had been completed (i.e. their implementation was completed or financing ended). The highest number of projects was completed in Priority Axis 3 (3,856 projects).

More than CZK 128.4 billion had been paid out to beneficiaries at the end of 2015. The highest volume of funds was disbursed in Priority Axis 1 (almost CZK 48.3 billion).

More detailed information about the Operational Programme Environment 2007–2013 is provided in the Final Report of the OPE.

## 02 / SUBSIDY PROGRAMMES ADMINISTERED BY THE FUND

### NATIONAL PROGRAMMES

The SEF CR offered subsidies from national sources via the so-called national programmes. This aid was intended for projects that could not be funded from EU sources.

Since 2010, support has been provided via grant and subsidy programmes which have been categorised in accordance with Schedules I to XVII of the Ministry of the Environment's Guideline No. 6/2010, on the Provision of Funds from the State Environmental Fund of the Czech Republic. In 2015, two new calls for applications were issued for programmes according to Schedules IV and XVII. For programmes according to Schedules III, XI and XVI, calls for applications were issued in 2014, but the acceptance of applications was not closed until the end of 2015. Applications for programmes according to Schedules VI and IX are accepted on an ongoing basis. The table below gives an overview of calls issued and closed in 2015.

No projects were financed in 2015 from the programmes according to Schedules VII, VIII, X, XII and XIV; and no new calls for applications were issued either. Administration of projects according to the remaining Schedules whose support had been approved in the preceding years continued; no new calls were issued.

## 02 / SUBSIDY PROGRAMMES ADMINISTERED BY THE FUND

### NATIONAL PROGRAMMES

#### Grant and Subsidy Programmes within National Programmes in 2015

Schedule No.	Programme	Announcement of call; deadline for acceptance of applications	Number of submitted applications	Number of approved applications	Intensity of aid [CZK mil.]
I	Programme to protect the Earth's ozone layer	call not issued	0	0	0
II	Programme to support purchase of land in particularly protected territories, their sanitary protection zones and significant landscape features	accepted on an ongoing basis	0	0	0
III	Aid programme to support environmental training, education and awareness-raising and environmental consultancy (EVVO and EP)	9 <sup>th</sup> call; 26. 11. 2014 – 27. 2. 2015	226	60	41,87
IV	Aid programme to support municipalities located in national park regions	4 <sup>th</sup> call; 31. 3. – 30. 9. 2015	60	0	0
V	Aid programme to support water management activities	call not issued	0	0	0
VI	Aid programme to support the system for end-of-life vehicle disposal	ongoing acceptance; closed every six months	134	102	9,12
VII	Aid programme to support the submitters of project proposals from EU funds	acceptance of applications suspended	0	0	0
VIII	Aid programme to support species diversity of non-reproduction plants and preservation of their gene sources	suspended	0	0	0
IX	Programme for the winner of the CR Green Ribbon Award – care about the greenery and the environment	acceptance on an ongoing basis throughout the entire year following the award	11	11	4,23
X	Programme to support measures in the areas affected by floods in 2010	call not issued	0	0	0
XI	Programme to support recovery stays for children from areas with worsened air quality	4 <sup>th</sup> call; 24. 11. 2014 – 30. 1. 2015	201	192	35,48
XII	A joint programme of the Moravian-Silesian Region and the Ministry of the Environment to promote the replacement of existing hand-filled solid fuel boilers for new, low-emission automatic coal, biomass or coal-and-biomass fired boilers in the Moravian-Silesian Region	This programme was replaced by the Joint Programme to Promote the Replacement of Boilers (Schedule XIII)	0	0	0
XIII	Joint programme to promote the replacement of boilers	call not issued	0	0	0
XIV	Rapid financial assistance programme to remove the consequences of floods in 2013	call not issued	0	0	0
XV	Programme to support the replacement of boilers in areas affected by floods in 2013	call not issued	0	0	0
XVI	Programme of greenery in cities and their surroundings (Programme to support residential greenery)	2 <sup>nd</sup> call, acceptance of applications 22. 12. 2014 – 31. 3. 2015	192	115	39,67
XVII	Programme to support preparation of regional waste management plans	1 <sup>st</sup> call, acceptance of applications 9. 1. – 9. 3. 2015	14	13	7,34
<b>Total</b>			<b>838</b>	<b>493</b>	<b>137,71</b>

## 02 / SUBSIDY PROGRAMMES ADMINISTERED BY THE FUND

### NATIONAL PROGRAMME ENVIRONMENT

In an effort to make the range of aid on offer from national sources more transparent and to unify its terms and conditions, the Ministry of the Environment (the "MoE") approved the National Programme Environment in 2015. This programme supersedes the national programmes announced via schedules to MoE Guideline No. 6/2010. Supported projects and activities are designed as complementary to the projects receiving aid from the Operational Programme Environment, the New Green Savings programme and programmes administered directly by the Ministry of the Environment. Aid is granted to applicants on the basis of MoE Guideline No. 4/2015, on Provision of Funds from the SEF CR in the form of subsidies, loans or a combination of both.

A total of eleven calls for applications for subsidies had been issued within the NPE by the end of 2015. Acceptance of applications for five of these calls was ended in 2015.

The Fund evaluates applications received based on environmental and economic indicators, the methodological and technical level of their conception and the criteria specified in the respective call. The assessed applications that are in accordance with MoE Guideline No. 4/2015 and meet the terms and conditions of the call are submitted to the Fund Council for consideration and subsequently delivered to the Minister of the Environment to be granted aid.

#### List of NPE Calls in 2015

Call No.	Programme	Acceptance of applications	Number of submitted applications	Number of approved applications including expected applications	Intensity of aid (subsidy) [CZK mil.]
1/2015	PO 3 Waste, old burden, environmental risks	27. 5. 2015 – 27. 7. 2015	4	4	34,17
2/2015	PO 6 Environmental prevention	25. 5. 2015 – 31. 8. 2015	26	16	16,08
3/2015	PO 3 Waste, old burden, environmental risks	12. 10. 2015 – 31. 12. 2015	1	1	7,49
4/2015	PO 4 Natural and landscape	3. 8. 2015 – 31. 12. 2015	5	5	52,96
5/2015	PO 2 Air	3. 8. 2015 – 30. 10. 2015	2	2	0,56
6/2015	PO 5 Environment in towns and municipalities	1. 1. – 31. 12. 2016	0	0	0
7/2015	PO 1 Water	13. 11. 2015 – 31. 12. 2016	0	0	0
8/2015	PO 7 OPE co-financing	14. 12. 2015 – 31. 12. 2016	0	0	0
9/2015	PO 3 Waste, old burden, environmental risks	28. 12. 2015 – 31. 3. 2016	0	0	0
10/2015	PO 1 Water	28. 12. 2015 – 29. 4. 2016	0	0	0
11/2015	PO 5 Environment in towns and municipalities	28. 12. 2015 – 8. 2. 2016	0	0	0
<b>Total</b>			<b>38</b>	<b>28</b>	<b>111,26</b>

## 02 / SUBSIDY PROGRAMMES ADMINISTERED BY THE FUND

### NEW GREEN SAVINGS PROGRAMME – NEW GIS

The outline of the New Green Savings programme was approved by the government at the beginning of 2013. Due to the demands related to the preparation of programme documentation in accordance with the requirements of the regulation regarding the involvement of the state budget in the financing of programmes of the state assets reproduction, this programme was not announced until January 2014.

The New Green Savings programme focuses mainly on subsidising measures aimed at increasing the energy efficiency of structures, replacement of non-compliant sources of heating and on subsidising the use of renewable energy sources in single-family houses and apartment blocks as well as in public buildings.

It is one of the measures that the Czech Republic has adopted on its path to fulfil the objectives related to energy savings in final consumption, and it is a motivating factor for investment in energy-efficient measures beyond the natural process of building renovations. With the reduction of the production of pollutants, it also improves the environment and protects the climate through the reduction of greenhouse gas emissions. The programme is also expected to boost the economic development, support small and mid-sized businesses active in the construction industry and help reduce energy costs of households and in the public administration.

The New Green Savings programme is financed from a share in the yields from the AAU auctions on the European market determined by the Act on the Terms and Conditions of the Greenhouse Gas Emission Trading. The Fund was authorised to administer this programme.

MoE Guideline No. 1/2014 for the first grant call for subsidies related to single-family houses is the basic document of the programme. Following the experience with the first grant call, the programme terms and conditions were regulated by MoE Guideline No. 2/2015 in 2015. The main changes in aid granted to single-family houses included accelerated administration, aid granted for particular measures and simpler subsidy calculation. The programme also newly includes aid granted for measures implemented in apartment blocks.

**Applicants for aid may submit their applications in the following aid areas:**

- A – improving energy performance
- B – construction of very high energy performance buildings
- C – efficient use of energy sources

Acceptance of applications as part of the New GIS programme is announced through calls for grant applications. A total of three calls for grant applications were issued in 2015. It was the second call for single-family house owners and builders with an allocation of CZK 600 million and the first grant call related to the support of energy savings in apartment blocks with an allocation of CZK 500 million. The acceptance of applications under these calls started in May 2015. In the area of aid for single-family houses, acceptance of applications ended with the exhaustion of the allocation on 15 July 2015. The acceptance of applications for apartment buildings ended on 31 October 2015.

The acceptance of applications in the third grant call for single-family house owners and builders was launched in October 2015. This is an ongoing call and the acceptance of applications will continue until 2021. The available allocations will be gradually replenished depending on yields from the sale of emission allowances.

As for the number of applications submitted as part of the calls related to single-family houses, applicants showed the highest interest in Aid Areas A and C. The majority of applications were filed prior to the implementation of the supported measure. Individuals (not entrepreneurs) were the most frequent type of applicants. The highest number of applications was submitted in the Moravian-Silesian Region and in the Central Bohemian Region.

The New GIS programme is currently continuing in processing of applications. Additional information about the programme is available in the New GIS Programme Annual Report for 2015.

#### List of Funds Approved and Paid Out under Separate Calls (as at 31 December 2015)

Call	Number of applications submitted	Total requested aid (in millions of CZK)	Number of applications disbursed	Aid paid out (in millions of CZK)
1st New GIS call: single-family houses	6 606	1 457,1	2 931	280,7
2nd New GIS call: single-family houses	4 722	1 067,4	1 108	104,4
3rd New GIS call: single-family houses	1 670	361,1	102	6,7
1st New GIS call: apartment blocks	290	174,3	2	0,9
<b>Total</b>	<b>13 288</b>	<b>3 059,9</b>	<b>3 532</b>	<b>358,7</b>

## 02 / SUBSIDY PROGRAMMES ADMINISTERED BY THE FUND

### OTHER ADMINISTERED PROGRAMMES

#### Green Savings (Green Investment Scheme, GIS)

The Green Savings programme (also GIS, the Green Investment Scheme) that was announced on 7 April 2009 was intended for the general public. It supported energy savings in single-family houses and apartment blocks, installation of low-emission biomass-fired heat sources, efficient heat pumps and solar collectors as well as the construction according to passive energy standards. Aid applications were received between April 2009 and October 2010.

A modification in the programme terms in June 2010 facilitated provision of aid for public sector buildings too. Applications were accepted under a one-time call between July and August 2010.

The processing of several applications for support of residential buildings (single-family houses and apartment blocks) where the processing could not be duly completed during the term of the programme continued in 2015. These primarily include applications returned for processing after the resolution of court disputes, after public administration inspections, applicant complaints, etc.

In 2015, aid for 49 applications amounting to a total of CZK 118.3 million was paid in the area of residential buildings as part of the GIS. For public sector buildings, aid for 27 applications in the total amount of CZK 51.2 million was paid.

On 10 December 2015, the minister signed Amendment No. 4 to MoE Guideline No. 7/2010 and issued the second call for applications for aid related to energy savings in public sector buildings with an allocation of CZK 150 million. Acceptance of applications under this call started on 15 December 2015 and it was completed on 31 May 2016. Amendment 4 extended the duration of the programme for public sector buildings until the end of 2017.

As at 31 December 2015, aid for a total of 74,055 applications of a total amount of CZK 20,315.4 million had been paid out in the residential buildings sector. For public sector buildings, aid for 55 applications of a total amount of CZK 120.1 million had been paid.

#### New Green Savings 2013

The New Green Savings programme 2013 (also New GIS, New Green Investment Scheme) was announced in 2013 due to postponement of the announcement of the New Green Savings programme to 2014. This programme supported measures aimed at increasing the energy performance of single-family houses, at the construction of single-family houses with very low energy performance and at measures resulting in efficient use of energy sources. The programme was financed from the SEF CR funds.

One grant call was published in this programme with an allocation of CZK 1 billion. The receipt of applications took place until December 2013.

In 2015, administration of applications received in 2013 continued, i.e. applicants were submitting documents about the implementation of the measures supported. A total of 4,213 applications with a total amount of aid of CZK 673.01 million were approved as part of the New GIS 2013. A total of 3,046 applications for aid amounting to CZK 340.69 million have already been paid out, including 1,454 applications of a total amount of CZK 241.51 million disbursed in 2015.



## 03 / FUND MANAGEMENT

The Fund has sent  
more than

**2,5**

**billion of CZK**  
into the environment



## 03 / FUND MANAGEMENT

### ECONOMIC INFORMATION

The Fund arranged ongoing provision of funds to the approved projects in accordance with the valid internal rules applicable to the release of funds, including the coverage of the operational expenditure of the Fund Office.

Of the total amount of the contracted funds, actual allocations as at 31 December 2015 totalled:

- CZK 2,168 million to financial support through transfers (subsidies) (including CZK 233.2 million for national programmes; CZK 0.2 million for ISPA/CF; CZK 1,577.6 million for the OPE; CZK 241.5 million for the New GIS 2013 and CZK 115.5 million for the GIS),

- CZK 344.5 million to financial support granted through loans (only the OPE),

- Total: CZK 2,512.5 million.

Total revenues of the Fund amounted to CZK 2.06 billion in 2015; total expenditure amounted to CZK 3.11 billion (subsidies: CZK 2.17 billion; loans: CZK 0.34 billion; Fund Office costs: CZK 0.6 billion).

#### The Fund's Financial Balance as at 31 December 2015 (in millions of CZK, incl. the 2015/2014 index)

	2015	2014	2015/2014 index
Initial balance as at 1 Jan total	6 327,3	7 189,0	88,0
FKSP (Fund of Cultural and Social Needs) (currently CZK 0.5 million minus balance as at 1 Jan CZK 0.4m)	0,1	-0,3	x
Formation of balance resources	1 542,2	1 504,8	102,5
Transfers from the state budget	325,3	312,1	104,2
Loan repayments	199,0	201,3	98,9
<b>Total revenues</b>	<b>2 066,5</b>	<b>2 018,2</b>	<b>102,4</b>
<b>Total resources</b>	<b>8 393,9</b>	<b>9 206,9</b>	<b>91,2</b>
Balance resource allocation			
Transfers (subsidies)	2 052,6	1 876,6	109,4
Loans	344,5	316,9	108,7
GIS (GS) from the Fund's resources	115,4	62,1	185,8
<b>Total</b>	<b>2 512,5</b>	<b>2 255,6</b>	<b>111,4</b>
Fund Office	598,7	572,8	104,5
MUFIS interest + repayments	0,0	51,2	x
<b>Total expenditures</b>	<b>3 111,2</b>	<b>2 879,6</b>	<b>108,0</b>
Expenditure limit for 2015 in accordance with Government Resolution No. 437 dated 16 June 2014, updated by Government Resolution No. 734 dated 9 September 2015	4 230,5	4 087,4	103,5
Difference between expenditure and limit	1 119,3	1 207,8	x
<b>Balance of funds as at 31 December 2015</b>	<b>5 282,7</b>	<b>6 327,3</b>	<b>83,5</b>

## 03 / FUND MANAGEMENT

### SEF CR REVENUES

In 2015, the Fund's revenues amounted to CZK 2,066.5 million. The revenue budget was fulfilled to 120.3%.

The Fund's revenues primarily include pollution charges for damage to individual environmental components which totalled CZK 1,443.2 million in 2015. Revenue from penalties and financial sanctions amounted to CZK 59.2 million. Total loan repayments and interest thereon has been declining for several years. Their share of the Fund's revenues was at 9.6%

(i.e. CZK 199 million). Subsidies from the state budget for the payment of expenditure associated with the financing of technical assistance amounted to CZK 325.3 million. These revenues do not form part of the state budget of the Czech Republic.

By law, the allocation of the Fund's funds is subject to the decision by the Minister of the Environment, based on the recommendations of the Fund Council as an advisory body.

#### Structure of Fulfilment of the Revenue Budget in 2015 (in millions of CZK)

Budget item	2015 budget	Revenues as at 31 Dec. 2015	Fulfilment (%)	Difference
Wastewater	180,0	170,9	94,9	-9,1
Groundwater	290,0	357,0	123,1	67,0
Air	300,0	282,0	94,0	-18,0
Waste	30,0	21,2	70,7	-8,8
Packaging	16,0	17,5	109,4	1,5
Car wrecks	230,0	387,5	168,5	157,5
Nature	260,0	207,1	79,7	-52,9
Penalties and financial sanctions	0,0	59,2	x	59,2
<b>Total</b>	<b>1 306,0</b>	<b>1 502,4</b>	<b>115,0</b>	<b>196,4</b>
Loan interest	14,5	15,5	106,9	1,0
Loan repayments (without loan refunds)	187,9	199,0	105,9	11,1
Revenues from financial settlement	0,0	11,7	x	11,7
Loan refunds for previous years	0,0	9,1	x	9,1
Other revenues	0,0	0,4	x	0,4
Subsidies from the state budget (TA)	208,7	325,3	155,9	116,6
Donations	0,0	3,1	x	3,1
<b>Total SEF CR</b>	<b>1 717,1</b>	<b>2 066,5</b>	<b>120,3</b>	<b>349,4</b>

## 03 / FUND MANAGEMENT

### SEF CR EXPENDITURE

Total expenditure as at 31 December 2015 amounted to CZK 3,111.2 million. Expenditure related to the implementation of projects focused on water protection had the largest share (33.4%, or CZK 1,040.8 million).

The total financing of projects (NP, ISPA/CF, OPE, GIS and New GIS 2013) amounted to CZK 2,512.5 million as at 31 December 2015. Of this sum, expenditure on refundable aid (loans) amounted to CZK 344.5 million, making up a share of 13.7%. Requests for transfers (subsidies) prevailed with

86.3% of contracted support (CZK 2,168 million). As for distribution of project expenditure, the implementation of projects focused on the water protection accounted for the highest percentage (41.1%, or CZK 1,040.8 million).

As of 2004, the Fund has been required to adhere to an expenditure limit. A government resolution determined the expenditure limit for 2015 that was subsequently increased to CZK 4,230.5 million. This limit was not exceeded.

#### Balance of the Expenditure Limit as at 31 December 2015 (in millions of CZK)

Expenditure limit for 2015	Actual expenditure in 2015	Difference
4 230,5	3 111,2	1 119,3

## 03 / FUND MANAGEMENT

### SEF CR EXPENDITURE

#### Financial Expenditure Implemented – Distribution of Expenditure by Environmental Components (as at 31 December 2015, in millions of CZK)

	Transfers (subsidies)	Share (%)	Loan	Share (%)	Total expenditure	Share %
<b>Water total</b>	<b>707,4</b>	<b>32,6</b>	<b>333,4</b>	<b>96,8</b>	<b>1 040,8</b>	<b>41,4</b>
of which NP	8,4	0,4	0,0	0,0	8,4	0,3
of which CF	0,2	0,0	0,0	0,0	0,2	0,0
of which OPE	698,8	32,2	333,4	96,8	1032,2	41,1
<b>Nature total</b>	<b>286,8</b>	<b>13,2</b>	<b>0,0</b>	<b>0,0</b>	<b>286,8</b>	<b>11,4</b>
of which NP	99,1	4,6	0,0	0,0	99,1	3,9
of which OPE	187,7	8,7	0,0	0,0	187,7	7,5
<b>Air total</b>	<b>944,7</b>	<b>43,6</b>	<b>0,8</b>	<b>0,2</b>	<b>945,5</b>	<b>37,6</b>
of which NP	109,1	5,0	0,0	0,0	109,1	4,3
of which OPE	478,6	22,1	0,8	0,2	479,4	19,1
of which GIS	115,5	5,3	0,0	0,0	115,5	4,6
of which New GIS 2013	241,5	11,1	0,0	0,0	241,5	9,6
<b>Waste</b>	<b>229,1</b>	<b>10,6</b>	<b>10,3</b>	<b>3,0</b>	<b>239,4</b>	<b>9,5</b>
of which NP	16,6	0,8	0,0	0,0	16,6	0,7
of which CF	0,0	0,0	0,0	0,0	0,0	0,0
of which OPE	212,5	9,8	10,3	3,0	222,8	8,9
<b>TOTAL</b>	<b>2 168,0</b>	<b>100,0</b>	<b>344,5</b>	<b>100,0</b>	<b>2 512,5</b>	<b>100,0</b>
of which NP	233,2	10,8	0,0	0,0	233,2	9,3
of which CF	0,2	0,0	0,0	0,0	0,2	0,0
of which OPE	1 577,6	72,8	344,5	100,0	1 922,1	76,5
of which GIS	115,5	5,3	0,0	0,0	115,5	4,6
of which New GIS 2013	241,5	11,1	0,0	0,0	241,5	9,6

When categorised by region, the SEF CR paid the highest volume of funds (not including the GIS) to the South Moravian Region (CZK 383.2 million). When categorised by the type of entity, the SEF CR paid the highest amount of funds to towns and municipalities (CZK 1,071.4 million, or 44.7% of the total allocated funds).

Costs associated with the Fund's activities (Fund Office costs) amounted to CZK 598.7 million. Eligible expenditure of the Fund Office connected with the administration of the OPE, New GIS and OP Human Resources and Employment programmes is paid to the Fund from a subsidy from the state budget. This subsidy forms part of the Fund's revenues.

Expenditure of the Fund Office also includes expenditure related to wastewater monitoring in accordance with the Water Act which amounted to CZK 4.4 million in 2015.

## 03 / FUND MANAGEMENT

### SEF CR ASSETS

The Fund is a legal entity. The Fund is managed and administered by the Ministry of the Environment. The management of the Fund's assets is governed by the Act on the Assets of the Czech Republic and its Representation in Legal Relations. In 2015, the Fund managed assets amounting to almost CZK 376.74 million.

#### Fund's assets as at 31 December 2015

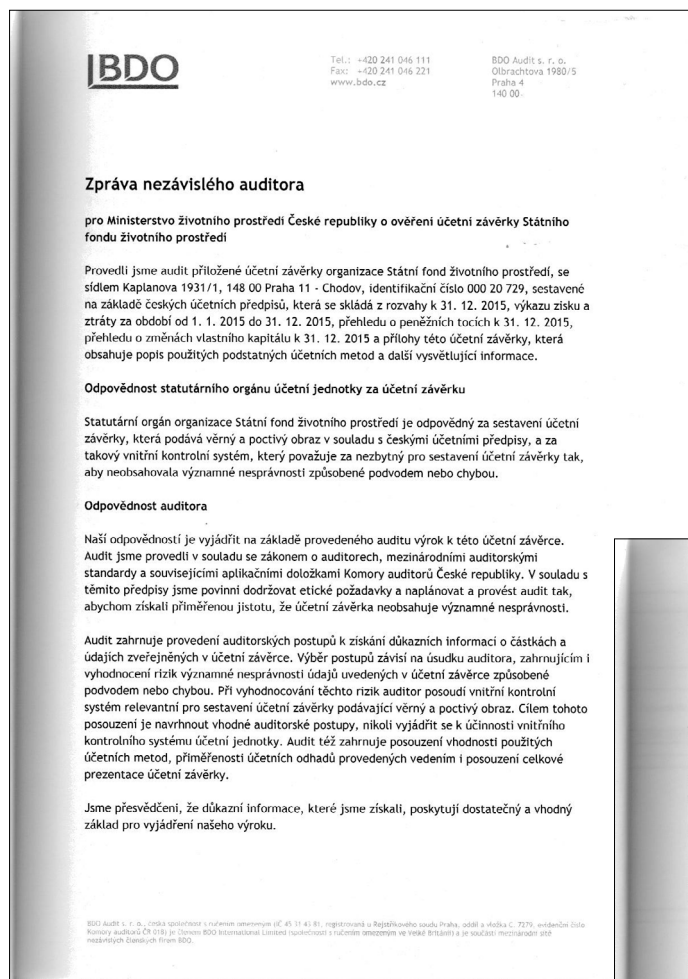
Account name	Balance (in mil. of CZK)
Fixed assets (tangible. intangible)	189,08
Low-value assets (tangible. intangible)	74,98
Buildings, structures	103,36
Land	9,08
Construction projects	0,24
<b>Total</b>	<b>376,74</b>

The Fund has the right to manage a building located in Kaplanova 1931/1 in Prague 11. Under a loan for use agreement, a part of this building has been used by the Nature Conservation Agency of the Czech Republic (a State organisational unit established by the Ministry of the Environment) since May 2010. Under this agreement and its amendments, the Agency shares in the payment of overhead costs of the building.

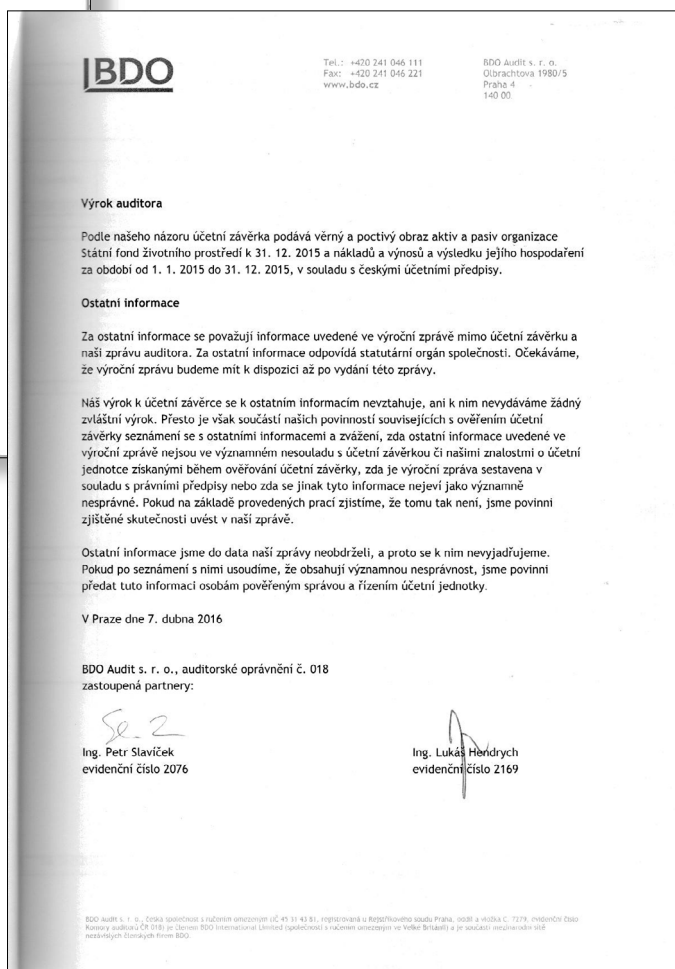
In 2015, the Fund made deductions for depreciation of a total of CZK 17.2 million. Additional information on the financial performance of the SEF CR can be found in the Annual Report on Financial Management of SEF CR for 2015.

## 03 / FUND MANAGEMENT

### AUDITOR'S REPORT



The audit focused on the annual final accounts of the State Environmental Fund of the Czech Republic in 2015. The audit was carried out by BDO Audit, s. r. o. in accordance with Act No. 254/2000 Coll., on Auditors, and in accordance with the International Standards on Auditing (ISA) and the related application clauses of the Chamber of Auditors of the Czech Republic. The auditor did not express any reservations.



## 04 / HUMAN RESOURCES AT SEF CR



There were  
**521**  
employees  
in the Fund  
at the end of the year



## 04 / HUMAN RESOURCES AT SEF CR

The SEF CR had a total of 521 employees as at 31 December 2015. The average headcount in 2015 was 533 persons. This number includes only employees employed under employment or civil service contracts. Agreements to perform a job and agreements to work (contracts to provide services) are not included.

The average gross monthly wage of an SEF CR employee according to wage assessments in 2015 was CZK 32,972.

### Age Structure of Employees (as at 31 December 2015)

Age group	Men*	Women*	Total*	%
Under 30 years old	44	98	142	27,26
31–40 years old	112	108	220	42,23
41–50 years old	25	39	64	12,28
51–60 years old	24	48	72	13,82
over 60 years old	14	9	23	4,41
<b>Total</b>	<b>219</b>	<b>302</b>	<b>521</b>	
<b>Total (%)</b>	<b>42,03</b>	<b>57,97</b>	<b>100</b>	<b>100</b>

\* Average recalculated number for the period January to December 2015

### SEF CR MANAGEMENT (as at 31 December 2015)

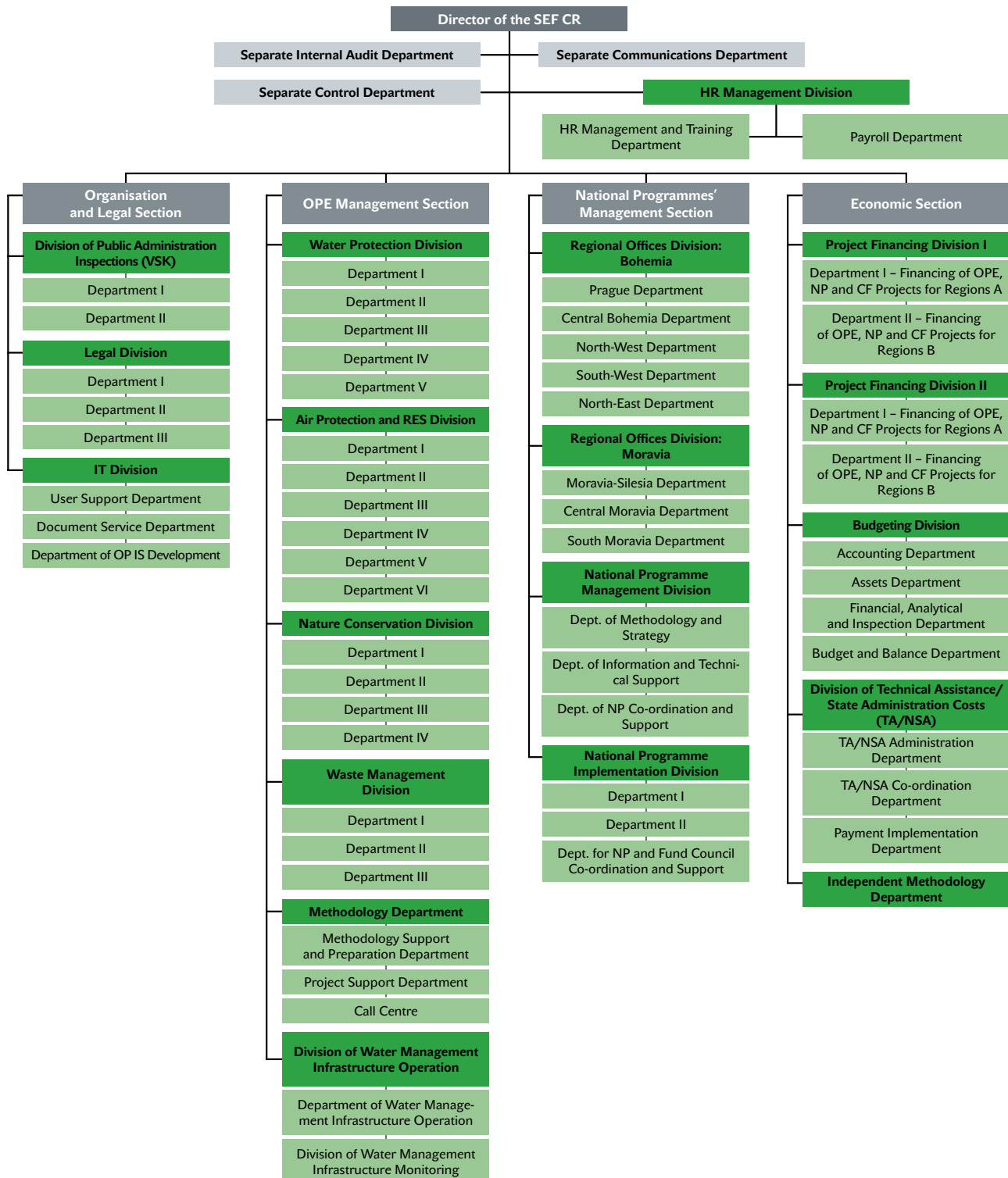
<b>Ing. Petr Valdman</b>	SEF CR Director
<b>Bc. Martina Zavadilová</b>	Director of the Organisational and Legal Section
<b>Mgr. Leo Steiner</b>	Director of the National Programmes' Management Section
<b>Mgr. Martin Kubica</b>	Director of the OPE Management Section
<b>Ing. Pavel Jakobe</b>	Director of the Economic Section

## PROFESSIONAL DEVELOPMENT OF SEF CR EMPLOYEES

Employees' professional qualifications are important for the SEF CR. That is why the Fund provided its employees with courses and training courses in 2015, both via e-learning and personal attendance of courses. The Fund drew funds for employee education from the Operational Programme Environment, GIS and the OP Human Resources and Employment technical assistance resources.

In 2015, the SEF CR employees participated in 732 different courses and seminars, including 478 specialised training courses and 39 courses focused on information technologies. A total of 215 persons were trained in presentation, communication and management skills. A total of 281 employees attended language courses. They could choose between English, German and French languages.

## ORGANISATIONAL STRUCTURE OF SEF CR



## 05 / TRADE UNION ORGANISATIONS

Two trade union organisations operate at the Fund. The Trade Union Organisation at the State Environmental Fund of the Czech Republic has been active since September 2011. Michal Tomáš is the chairman of this organisation. The Trade Union Organisation of SEF CR Employees was established in March 2012 with the chairman being Jan Matějka. The collective agreement for an indefinite period of time was signed by the trade union representatives and the Fund's management in June 2013.

## 06 / FUND COUNCIL

The SEF CR Council is an advisory body to the Minister of the Environment. Its task is to discuss the fundamental issues related to the creation and allocation of the Fund's funds as well as to approve the annual final accounts of the Fund. Council members and its chairman are appointed and removed by the Minister of the Environment. The SEF CR Council held six meetings in 2015.

### SEF CR Council Chairman (as at 31 December 2015)

Ladislav Okleštek	Chamber of Deputies of the Parliament of the Czech Republic, Committee for Public Administration and Regional Development
-------------------	---

### SEF CR Council members (as at 31 December 2015)

Ing. Josef Hájek	Chamber of Deputies of the Parliament of the Czech Republic, Committee for the Environment
Ing. Jaroslav Holík	Chamber of Deputies of the Parliament of the Czech Republic, Committee for the Environment
RSDr. Josef Nekl	Chamber of Deputies of the Parliament of the Czech Republic, Committee for the Environment
Ing. Ladislav Šinčl	Chamber of Deputies of the Parliament of the Czech Republic, Committee for the Environment
Ing. Josef Uhlík	Chamber of Deputies of the Parliament of the Czech Republic, Committee for Public Administration and Regional Development
RNDr. Jan Zahradník	Chamber of Deputies of the Parliament of the Czech Republic, Committee for the Environment
Ing. Václav Zemek	Chamber of Deputies of the Parliament of the Czech Republic, Committee for the Environment
Ing. Ivo Bárek	Senate, Committee for Spatial Development, Public Administration and the Environment
RNDr. Miloš Vystrčil	Senate, Committee for Spatial Development, Public Administration and the Environment
Ing. Jan Kříž	Ministry of the Environment
Ing. Jiří Vaníček	Ministry of Finance
Ing. Pavlína Kulhánková	Ministry of Industry and Trade of the Czech Republic
JUDr. Jan Blecha	Ministry of Regional Development
Ing. Dan Jiránek	Association of Towns and Municipalities of the Czech Republic
Mgr. Daniel Havlík	Association of Regions of the Czech Republic
RNDr. Libor Ambrozek	Czech Union for Nature Conservation

## 07 / PROVISION OF INFORMATION



The total number  
of requests  
for information  
received by the Fund  
reached

**57**

## 07 / PROVISION OF INFORMATION

### Pursuant to Act No. 106/1999 Coll.

Within the meaning of Section 18(1) of Act No. 106/1999 Coll., on Free Access to Information, as amended (the "Act"), the State Environmental Fund of the Czech Republic (the "SEF CR") publishes an annual report on activities relating to the provision of information under Act No. 106/1999 Coll., to the following extent:

- |  |  |
|--|--|
| <ul style="list-style-type: none"> <li>• S. 18(1)(a) of Act No. 106/1999 Coll.:<br/>Number of requests for information submitted: <b>57</b><br/>Number of issued decisions to reject a request: <b>13</b></li> </ul>   | <ul style="list-style-type: none"> <li>• S. 18(1)(e) of Act No. 106/1999 Coll.:<br/>Number of complaints submitted pursuant to Section 16a of Act No. 106/1999 Coll., reasons for the complaints and a brief description of the mode of their administration:</li> </ul>   |
| <ul style="list-style-type: none"> <li>• S. 18(1)(b) of Act No. 106/1999 Coll.:<br/>Number of appeals filed against a decision: <b>0</b></li> </ul>  | <p>The SEF CR received <b>one complaint</b> regarding the procedure during the administration of a request for information. The complaint was submitted by an applicant who had not received the relevant information within the fifteen-day time limit following the receipt of the request pursuant to Section 14(5) of Act No. 106/1999 Coll. The subject of the complaint also concerned the extent of the data provided. The SEF CR upheld the complaint and subsequently provided the information requested pursuant to Section 16a(5) of Act No. 106/1999 Coll. and clarified the criticised failings to the applicant.</p> |
| <ul style="list-style-type: none"> <li>• S. 18(1)(c) of Act No. 106/1999 Coll.:<br/>Description of the material parts of each court decision regarding the review of the legality of the obligated entity's decisions to refuse a request for the provision of information and an overview of all expenses incurred by the obligated entity in connection with judicial proceedings regarding the rights and obligations under Act No. 106/1999 Coll., including its own employees' costs and the costs of legal representation: <b>0</b></li> </ul> | <ul style="list-style-type: none"> <li>• S. 18(1)(f) of Act No. 106/1999 Coll.:<br/>Additional information regarding the application of Act No. 106/1999 Coll.:<br/>Number of requests from a superior authority concerning the provision of assistance during the processing of requests submitted: <b>4</b></li> </ul>   |
| <ul style="list-style-type: none"> <li>• S. 18(1)(d) of Act No. 106/1999 Coll.:<br/>Specification of exclusive licences provided, including justification of the necessity to provide an exclusive licence: <b>0</b></li> </ul>  |  |

## 08 / CONTACT DETAILS

### SEF CR

Kaplanova 1931/1  
148 00 Prague 11 – Chodov  
Phone: 267 994 300  
Fax: 272 936 597

**Correspondence address**  
Olbrachtova 2006/9  
140 00 Praha 4

**www.sfzp.cz**  
E-mail: [dotazy@sfzp.cz](mailto:dotazy@sfzp.cz)  
Infoline for applicants: 800 260 500

### Contacts to regional offices

THE SOUTH BOHEMIAN REGION  
Mánesova 3a  
371 03 ČESKÉ BUDĚJOVICE

THE SOUTH MORAVIAN REGION  
Kotlářská 51  
602 00 BRNO

THE KARLOVY VARY REGION  
Majakovského 707/29  
360 05 KARLOVY VARY

THE HRADEC KRÁLOVÉ REGION  
Třída ČSA 383  
500 03 HRADEC KRÁLOVÉ

THE LIBEREC REGION  
Voroněžská 144  
460 01 LIBEREC

THE MORAVIAN-SILESIA REGION  
Českobratrská 7  
702 00 OSTRAVA 2

THE OLOMOUC REGION  
Wellnerova 7  
779 00 OLOMOUC

THE PARDUBICE REGION  
Pernerova 168 (Cheming Building)  
530 02 PARDUBICE

THE PLZEŇ REGION  
Kopeckého sady 11  
306 32 PLZEŇ

PRAGUE  
Olbrachtova 2006/9  
140 00 PRAHA 4

THE CENTRAL BOHEMIAN REGION – Prague  
Olbrachtova 2006/9  
140 00 PRAHA 4

THE ÚSTÍ NAD LABEM REGION  
Mírové náměstí 3129/36  
400 01 ÚSTÍ NAD LABEM

THE VYSOČINA REGION  
Havlíčková 111  
586 02 JIHLAVA

THE ZLÍN REGION  
Budova 51, J. A. Bati 5645  
760 01 ZLÍN

## LIST OF ABBREVIATIONS

<b>AAU</b>	Assigned Amount Unit
<b>AOPK ČR</b>	Agentura ochrany přírody a krajiny ČR (Nature Conservation Agency of the Czech Republic)
<b>CF</b>	Cohesion Fund
<b>E</b>	environment
<b>EC</b>	European Commission
<b>ERDF</b>	European Regional Development Funds
<b>EU</b>	European Union
<b>EVVO and EP</b>	Environmental training, education and awareness-raising and environmental consultancy
<b>FKSP</b>	Fund of Cultural and Social Needs
<b>GIS</b>	Green Investment Scheme (Green Savings programme)
<b>ISPA</b>	Instrument for Structural Policies for Pre-accession
<b>MUFIS</b>	Municipální finanční společnost, a. s.
<b>MoE</b>	Ministry of the Environment
<b>NP</b>	national programmes
<b>NPE</b>	National Programme Environment
<b>New GIS</b>	New Green Savings programme (New Green Investment Scheme)
<b>OP</b>	operational programme
<b>OP HRE</b>	Operational Programme Human Resources and Employment
<b>OPE 2007-2013</b>	Operational Programme Environment 2007-2013
<b>OPE 2014-2020</b>	Operational Programme Environment 2014-2020
<b>PA (PO)</b>	Priority axis
<b>SEF CR</b>	State Environmental Fund of the Czech Republic
<b>SB</b>	state budget
<b>TA</b>	technical assistance
<b>ZÚ</b>	Green Savings (Green Investment Scheme, GIS)





Published by: **The State Environmental Fund  
of the Czech Republic**  
Olbrachtova 2006/9  
140 00 Prague 4

Date of publication: March 2017

Photographs: Archives of the SEF CR