



STATE ENVIRONMENTAL  
FUND OF THE  
CZECH REPUBLIC

# Annual Report **2014**

STATE ENVIRONMENTAL  
FUND OF THE  
CZECH REPUBLIC



# Content

The Mission of the State Environmental Fund of the CR.....	1
Introduction.....	2
01 / THE MAIN ACTIVITIES .....	3
02 / GRANT PROGRAMMES AND FINANCING RESOURCES .....	4
Operational Programme Environment.....	5
Large projects in the OPE.....	9
The New Green Investment Scheme .....	10
National programmes .....	13
Other administered programmes .....	16
Green Investment Scheme.....	17
New Green Investment Scheme 2013.....	17
Large projects funded from the ISPA / Cohesion Fund.....	18
03 / FINANCIAL REPORT.....	19
An overview of the economic situation .....	20
Revenues.....	21
Expenditures.....	23
Property.....	24
Auditor's report .....	25
04 / HUMAN RESOURCES .....	26
Management of Fund.....	27
Fund Council.....	27
Organizational structure of the SEF CR .....	28
The professional development .....	29
Trade unions .....	29
05 / THE PROVISION OF INFORMATION .....	30
06 / CONTACTS.....	32
07 / LIST OF ABBREVIATIONS .....	33

## The Mission of the State Environmental Fund of the CR



Since 1992, the State Environmental Fund of the Czech Republic ("SEF CR" or the "Fund") has made fundamental contributions to investments for conserving and improving the environment. It primarily co-finances projects for water protection, air quality improvement, the use of renewable energy sources, waste management, nature conservation, landscape protection and environmental education.

The State Environmental Fund of the Czech Republic is a specifically targeted institution that was set up by Act No. 388/1991 Coll. The Fund grants direct financial support in the form of subsidies and indirect financial support through loans or contributions to partially cover certain interests. Direct financial support is drawn from national resources and from EU funds, specifically from the Cohesion Fund and the European Regional Development Fund.

## Introduction



*Without exaggeration, I can state that 2014 was one of the toughest years in the history of the Fund. The Operational Programme Environment was threatened by not drawing grants worth CZK 18 billion. This amount was reduced to zero for 2014 thanks to the enormous effort put forth by some colleagues in the State Environmental Fund and thanks to some acceleration measures. The faster use was especially enabled by the announcement of „fast-moving“ calls, improvements to the project evaluation process and the acceleration of their reimbursement. The above-mentioned 18 billion from European funds could be therefore used for other environmental projects in the Czech Republic. At the same time, we made significant progress in preparing the new Operational Programme for 2014 to 2020.*

*I should not forget to mention the successful launch of the New Green Investment Scheme, in which we have received more than six and a half thousand applications for supporting energy savings in family homes.*


*We can also boast the success of boiler subsidies in the Moravian-Silesian Region that reached the top five European projects in the 2014 Emas Awards 2014 in the category of large public sector organisations of the European Union. This grant programme to replace existing manually-filled solid fuel boilers with new efficient low-emission heat sources was subsequently extended to other regions of the Czech Republic.*

*We would not have been so successful without the commitment of all our colleagues from the State Environmental Fund CR. It was their yea, because all employees without exception contributed to the fact that the Fund is again perceived as a respected and healthily self-confident institution, capable of implementing programmes and meeting ambitious objectives. And for this, they all deserve a very big thank you.*

**Ing. Petr Valdman**  
Director of SEF CR



## 01 / THE MAIN ACTIVITIES



In 2014, the Fund  
administered

**6**  
subsidy  
schemes

## 01 / THE MAIN ACTIVITIES

The Fund's main activities include consultancy and advisory activities, receiving and evaluating grant applications, preparing proposals for meetings held by the Council of the SEF CR (Council of the Fund) and for implementing the minister's decisions, as well as producing a contractual agenda for providing support, an agenda for making contractual guarantees for granted loans, releasing funds

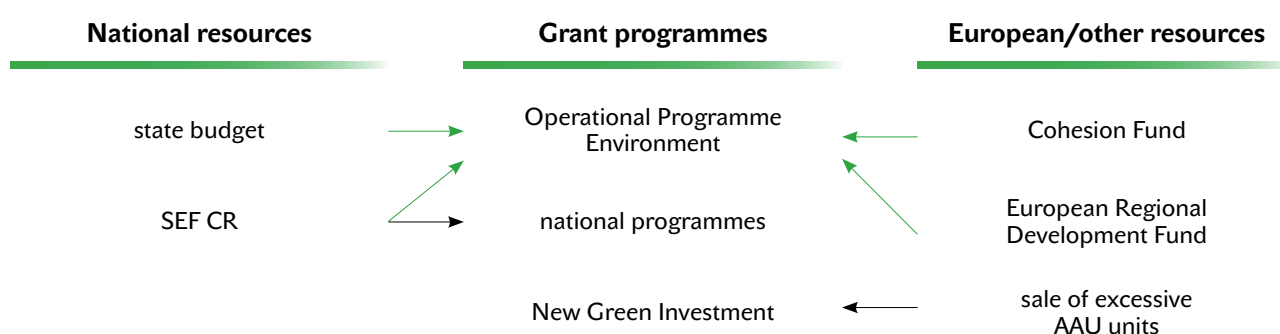
to support beneficiaries, including continuous monitoring of the purpose of funds' use, performing a final evaluation of the use of the funds provided and environmental effects achieved, monitoring the rate of return on loans up to the full settlement of obligations and possible imposition and collection of penalties in the event that contractual conditions for the provision of support are not met..

## 02 / GRANT PROGRAMMES AND FINANCING RESOURCES

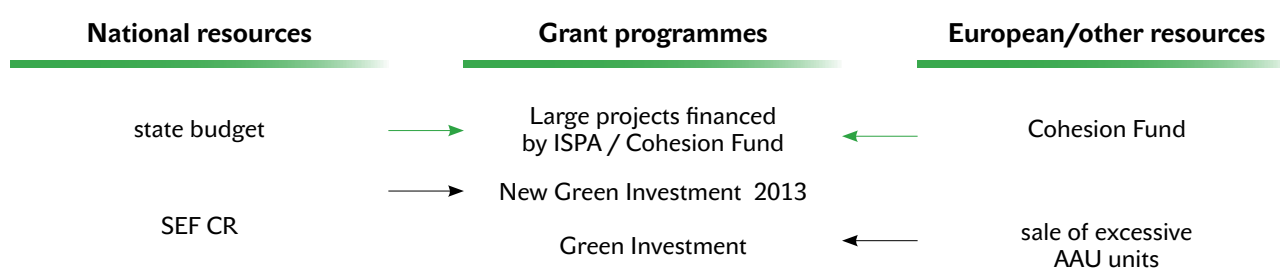
The State Environmental Fund provides grants to applicants from several grant programmes (see the charts). These programmes vary both with the source from which they are financed and the target group for which they are intended. In 2014, the Fund provided grants to applicants from the following grant programmes: The Operational Programme Environment, New Green Investment Scheme

2013 and national programmes. It also administered projects from programmes that have not yet been terminated, but that already do not provide support for new projects: The Cohesion Fund and the Green Investment Scheme. The Ministry of the Environment took over the administration of Swiss Funds projects in 2013.

### Programmes for which subsidies could be applied for in 2014



### Programmes winding down (no call for the submission of applications was announced in 2014; implementation and administration of approved projects continued)





## Operational Programme Environment



**2 414**

**applications**  
have been approved  
in the Operational  
Programme  
Environment

## Operational Programme Environment

Since 2007, the Operational Programme Environment has been financing projects to protect and improve the quality of the environment, especially from the European Regional Development Fund (ERDF) and the Cohesion Fund (CF).

Also in 2014, the OPE continued with a number of optimisation and acceleration measures. This led to a major positive turnaround in the rate of drawing European funds in 2014. The number of approved grant applications increased, especially due to the accelerated evaluation of fast-moving calls announced in the first half of the year, as well as the dynamics of their reimbursement. Some funds were reallocated and directed mainly towards area of intervention 3.2, which supports fast-moving projects and which has been showing a high absorption capacity for a long time. Funds

amounting to CZK 5 billion were transferred from Priority Axis 1, half a billion CZK was transferred from Priority Axis 8 and CZK 200 million was transferred from area of intervention 3.1 to area of intervention 3.2. Within Priority Axis 8, there was a transfer of funds from area of intervention 8.2 to 8.1 in the amount of CZK 120 million. Also appealing to recipients via telephone for the accelerated submission of documents, requests for payment, invoices and bank statements had a positive effect.

From the beginning of the programme until the end of 2014, a total of 63 calls for the submission of grant applications were announced in the OPE, while 7 calls were announced in 2014, namely calls LVII to LXIII. A total of 3,781 applications for subsidies were submitted in these seven calls, from which 2,414 applications were approved.

### **The Operational Programme Environment brings the Czech Republic funds for supporting specific projects in eight areas:**

**Priority Axis 1 – Improving the water management infrastructure and reducing flood risks**

**Priority Axis 2 – Improving the quality of the air and reducing emissions**

**Priority Axis 3 – Sustainable use of energy resources**

**Priority Axis 4 – Quality enhancement of waste management and removal of old ecological burdens**

**Priority Axis 5 – Reduction of industrial pollution and environmental risks**

**Priority Axis 6 – Improving the condition of nature and the landscape**

**Priority Axis 7 – Development of infrastructure for environmental education, consultancy and awareness**

**Priority Axis 8 – Technical assistance financed from the Cohesion Fund**



## Operational Programme Environment

### An overview of announced calls in 2014 (EU resources) – cumulatively

Call number	Commencement date for receipt of project applications	End date for receipt of project applications	PA number / Area of intervention / sub-areas	Allocation per call	Submitted grant application for 2014:		Projects with issued registration forms		Projects with issued Decisions/signed Contracts	
				in EUR	number	in EUR	number	in EUR	number	EUR
52	25. 9. 2013	15. 1. 2014	4.1	Alokace nebyla stanovena	61	72 644 116	707	94 498 374	477	48 499 158
			4.2		4	32 016 461	26	20 249 830	14	829 965
54	11. 10. 2013	7. 1. 2014	7	Alokace nebyla stanovena	261	30 601 985	202	16 238 216	167	13 382 392
56	23. 12. 2013	31. 1. 2014	1.3.1	14 427 412	6	6 462 514	3	6 164 272	0	0
57	29. 1. 2014	31. 3. 2014	2.1.5	36 068 530	8	50 085 867	8	50 085 867	8	50 085 867
58	5. 3. 2014	15. 4. 2014	1.3.1	133 453 562	163	15 544 264	148	13 613 636	132	7 834 817
			2.2.b)		54	12 203 898	29	5 967 136	11	1 165 571
			2.2.d)		223	9 910 632	184	8 079 019	182	7 998 482
			4.1		496	49 252 573	441	40 015 694	412	36 998 623
			4.2		17	2 610 840	13	2 492 810	5	234 451
			6.1		2	362 127	2	362 127	1	12 724
			6.2		27	6 234 452	18	3 717 507	16	1 300 585
			6.3		103	4 645 315	67	2 970 854	59	2 436 012
			6.4		258	27 484 062	129	12 582 583	123	11 176 221
			6.5		144	4 683 451	99	2 846 199	85	1 926 417
			6.6		57	4 609 594	48	2 105 687	46	1 762 439
59	5. 3. 2014	30. 5. 2014	2.1.1	18 034 265	83	9 972 274	48	4 672 223	23	2 185 755
			2.1.2		19	11 145 546	10	6 110 289	3	2 250 369
			2.1.3		480	34 506 896	422	30 355 324	400	27 872 694
60	5. 3. 2014	30. 4. 2014	3.1.1	126 239 856	56	6 806 618	44	5 468 536	9	659 490
			3.2		1 090	165 300 694	847	118 175 363	226	22 450 456
61	24.3. 2014	30. 6. 2014	1.1.1	144 274 121	19	51 786 996	10	28 046 380	0	0
			1.2		1	884 734	0	0	0	0
62	17. 4. 2014	30. 6. 2014	2.2.a)	18 034 265	8	3 041 924	7	2 838 551	0	0
			2.2.b)		30	5 054 262	23	3 762 465	0	0
			2.2.c)		7	1 142 979	6	974 849	0	0
			2.2.d)		103	4 121 770	85	3 599 928	15	695 926
63	5. 11. 2014	14. 11. 2014	1.1.1	72 137 060	1	30 838 410	0	0	0	0
Total					3 781	653 955 254	3 626	485 993 720	2 414	241 758 413

Note: Financial amounts in EUR are translated using the exchange rate as of 01/2015, i.e. 27.728 CZK/EUR.

## Operational Programme Environment

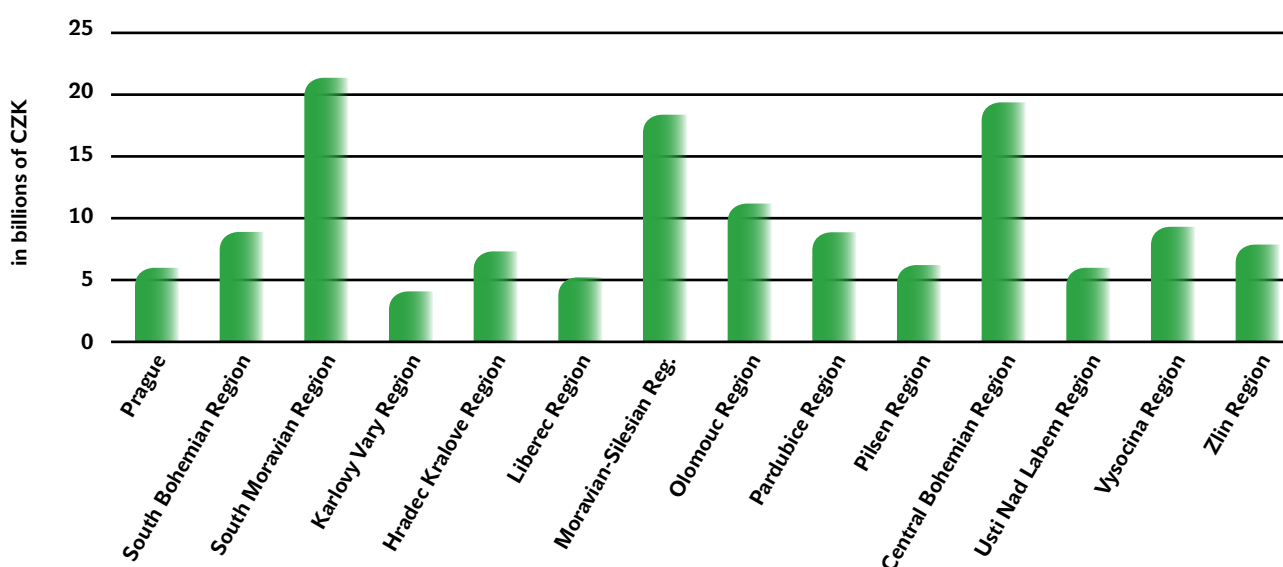
As of 31 December 2014, a total of 18,004 projects was approved for co-financing from the beginning of the programme, including 359 technical assistance projects within Priority Axis 8 with a total amount of granted funds of CZK 2.55 billion. The total volume of the subsidy approved from EU funds is CZK 130 billion.

The largest volume of funds amounting to almost CZK 52.3 billion was approved under Priority Axis 1 aimed at improving water management infrastructure and reducing flood risks. Conversely, the fewest resources were approved for applicants in Priority Axis 7.

### The amount of approved support from the OPE according to priority axis (as of 31 December 2014, in CZK)

Priority Axis	Number of projects	Overall expenses	Overall eligible expenses	ERDF/CF support	SEF/SB support	Overall amount of support
1	1 493	84 177 828 925	69 818 848 302	49 411 631 762	2 935 217 360	52 346 849 121
2	2 522	39 982 318 970	30 974 794 301	17 550 681 976	1 581 424 205	19 132 106 182
3	5 780	49 812 038 999	30 420 507 648	25 175 329 894	1 456 633 172	26 631 963 066
4	2 983	31 842 867 248	26 853 647 520	18 917 456 539	1 518 198 452	20 435 654 990
5	181	3 768 730 430	2 940 745 346	1 542 735 223	120 784 595	1 663 519 818
6	4 313	18 141 489 580	16 666 454 140	13 657 177 291	1 105 757 614	14 762 934 905
7	373	1 808 317 862	1 682 512 135	1 394 506 210	106 703 179	1 501 209 389
8	359	4 142 462 181	2 712 643 268	2 305 086 501	243 540 238	2 548 626 740
<b>Total sum</b>	<b>18 004</b>	<b>233 676 054 193</b>	<b>182 070 152 660</b>	<b>129 954 605 396</b>	<b>9 068 258 814</b>	<b>139 022 864 210</b>

### The amount of approved support from the OPE according to region (as of 31 December 2014)



By the end of 2014, 8,426 projects with a total amount of support exceeding CZK 56 billion were completed (i.e. their implementation was completed or their financing ended). The greatest number of projects (2 451) were completed in Priority Axis 3 – Sustainable use of energy sources.

Over CZK 91.7 billion was paid to recipients by the end of 2014 in the area of funds disbursement. The largest volume of funds was disbursed in Priority Axis 1, being more than CZK 35.6 billion.



## Operational Programme Environment

### Large projects in the OPE

Large projects are those whose total costs exceed EUR 50 million. Large projects are subject to approval by the European Commission based on recommendations from the national managing body (the Ministry of the Environment).

20 grant applications in the category of large projects were submitted from the launch of the OPE to the end of

2014; from this number, one project was submitted within Priority Axis 3, six projects in Priority Axis 4 and the rest were submitted within Priority Axis 1.

As of 31 December 2014, the European Commission approved a total of seven large projects. During 2014, the application for a grant for a large project entitled "The complete redevelopment and expansion of the Central WWTP Prague on Císařský ostrov" was submitted.

### An overview of large projects approved as of 31 December 2014

Area subsidies	Project title	Date of approval (MA)	Date of approval (Commission)	Total expenses in CZK	Total expenses in EUR (recalculating CZK/EUR exchange rate)	Total eligible expenses (CZK)	EU support in EUR	Disbursed to the applicant in CZK
4.2	Remediation and rehabilitation of an old contamination at the DIAMO state enterprise in the Mydlovary area – a chemical treatment plant and tailings pond K IV/D	25. 1. 2008	21. 4. 2010	705 095 534	25 658 498 (24,72)	550 531 845	20 033 910	467 951 745
1.1	The Cheb district - environmental measures	24. 11. 2008	22. 1. 2010	766 402 233	27 889 455 (24,72)	448 291 173	15 664 707	369 579 914
1.1	Water protection of the Dyje River basin – stage II	22. 12. 2008	19. 10. 2009	1 069 192 401	38 908 020 (26,10)	708 189 421	40 032 876	598 139 996
1.1	The improvement of water quality in the upper river basin of the Morava River – phase II	22. 12. 2008	27. 3. 2013	1 934 848 198	70 409 323 (23,57)	1 362 735 694	46 065 247	349 739 145
1.1	Water quality improvement in the Jihlava and Svratka Rivers above the Nové Mlýny Reservoir	19. 3. 2009	28. 9. 2009	784 640 595	28 553 151 (25,36)	523 030 798	19 033 144	431 325 271
1.1	Clean Bečva River II	7. 5. 2010	15. 3. 2011	1 415 417 093	51 507 172 (25,54)	923 530 095	33 607 354	377 598 661
1.1	Reconstruction and extension of sewerage systems in Brno	7. 5. 2010	22. 8. 2011	2 140 115 612	77 879 025 (25,75)	1 073 865 338	39 078 069	798 285 088
4.2	The removal of old environmental burdens after oil extraction in the catchment area of Moravská Nová Ves in the CHOPAV Morava River Quaternary	29. 10. 2012	-	2 085 234 019	83 879 084 (24,86)	1 630 010 486	57 229 315	643 126 980
4.1	The Chotíkov plant for producing energy from municipal waste (ZEVO Chotíkov)	29. 10. 2012	-	2 520 913 677	100 275 007 (25,14)	2 056 684 671	-	0

More detailed information about the Operational Programme Environment can be found in the OPE Annual Report for 2014.



## The New Green Investment Scheme



Applications worth

**CZK 1.48**  
**billion**

were received  
in the first call  
to support  
family houses



## The New Green Investment Scheme

The basic intent of the New Green Investment Scheme was approved by the government in early 2013. But due to the complexity of the required programme documentation's preparation according to Decree 560/2006 Coll., on state budget participation in financing programmes of property reproduction, this programme was announced on 6 January 2014.

The New Green Investment Scheme Programme is mainly aimed at supporting measures to reduce the energy intensity of buildings, replace obsolete heating sources and to promote the use of renewable energy sources.

It is one of the measures of the Czech Republic to achieve energy savings in final consumption and stimulate investment in energy saving measures beyond the natural process of renovating buildings. Reducing the emissions of pollutants also helps to improve the environment and

reduce greenhouse gas emissions to protect the climate. The programme should be also beneficial in stimulating the economy, supporting small and medium enterprises in the construction sector and in reducing energy costs in homes and public administration.

The source of funding of the new GIS programme is the proceeds from auctioning emission allowances in the European market, as provided by the law regulating the conditions for trading in greenhouse gas emissions. The basic document of the programme is ME Guideline No. 1/2014. The Fund was entrusted with its administration.

The receipt of applications in the new GIS programme is announced through calls for grant applications. In 2014, the first call to support family houses was declared. CZK 1.9 billion was allocated for this and the receipt of applications ran from 1 April to 31 December 2014.

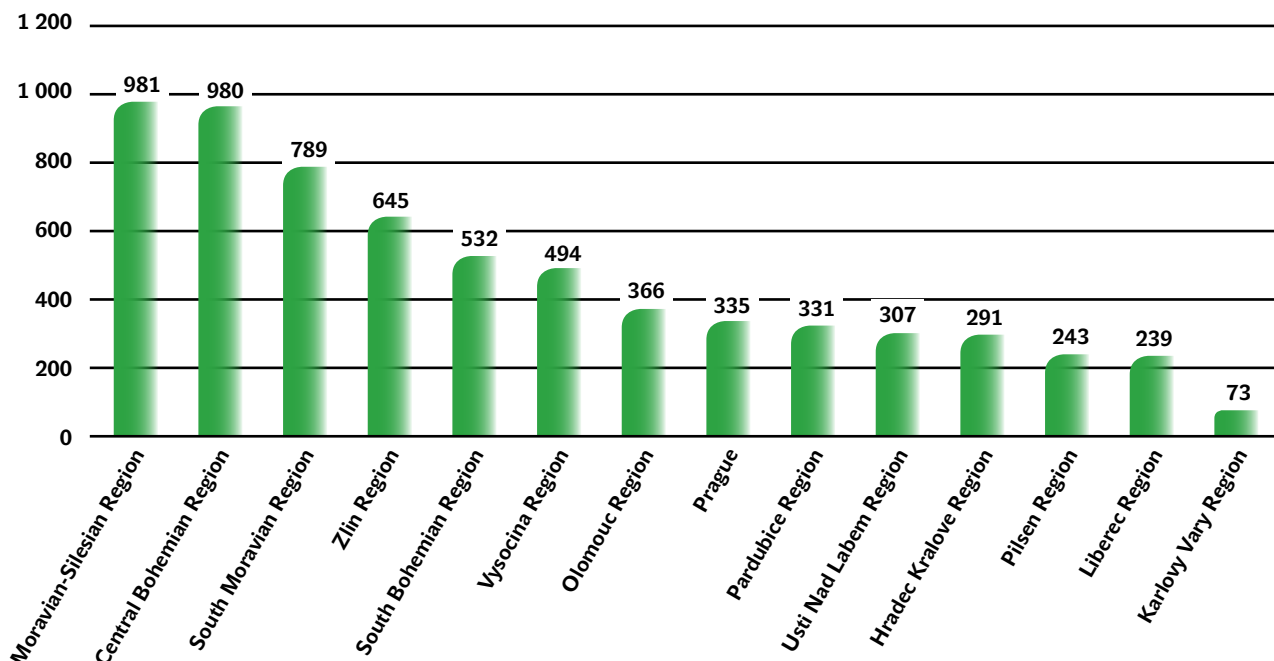
### An overview of requests for support according to individual areas of intervention

Area of intervention	Description	Number of requests for support	Number of requests for support (%)	Volume of support (mil. CZK)	Volume of support (%)
<b>A – total</b>	<b>Reducing energy consumption</b>	<b>7 753</b>	<b>44,67</b>	<b>800,13</b>	<b>53,95</b>
A.1	Level 1	1 403	8,08	268,94	18,13
A.2	Level 2	1 059	6,10	344,47	23,23
A.3	Level 3	254	1,46	124,15	8,37
A.4	Processing of expert assessments	2 547	14,67	50,17	3,38
A.5	Providing professional technical supervision	2 490	14,35	12,41	0,84
<b>B – total</b>	<b>Construction of family houses with very low energy consumption</b>	<b>1 668</b>	<b>9,61</b>	<b>428,03</b>	<b>28,86</b>
B.1	Level 1	495	2,85	201,72	13,60
B.2	Level 2	353	2,03	197,65	13,33
B.3	The processing of expert assessments and measurements of air permeability	820	4,72	28,66	1,93
<b>C – total</b>	<b>The efficient use of energy resources</b>	<b>7 936</b>	<b>45,72</b>	<b>254,98</b>	<b>17,19</b>
C.1	Replacing heat sources (when implementing Measure A)	798	4,60	47,81	3,22
C.2	Replacing heat sources (without implementing measure A)	714	4,11	43,22	2,91
C.3	Installation of solar thermal systems	3 317	19,11	120,98	8,16
C.4	Installation of forced ventilation systems	286	1,65	29,03	1,96
C.5	Processing of expert assessments for area of intervention C2	615	3,54	3,07	0,21
C.6	Processing of expert assessments for area of intervention C3	2 206	12,71	10,88	0,73
<b>Total sum</b>		<b>17 357</b>	<b>100,00</b>	<b>1 483,15</b>	<b>100,00</b>

## The New Green Investment Scheme

A total of 6,606 applications valued at CZK 1.48 billion was received in the first call to support family houses. The difference in the number of applications and the total number of requests for support lies in the fact that one application may include requests for more areas of intervention. The greatest interest was in area of intervention C, closely followed by area of intervention A. Most of the applications were submitted before the implementation of the supported activity (53.22% of the applications). The predominant type of applicants were individuals not engaged in business (96.88% of the applications). Most applications were submitted in the Moravian-Silesian and Central Bohemian regions, as shown in the chart below.

### The application structure by region of location of property



As of 31 December 2014, a total of 611 applications valued at more than CZK 34 million was paid.



## National programmes



The largest number  
of applications

**- 2 617 -**

was submitted  
in the Joint Boiler  
Replacement Scheme

## National programmes

The SEF CR offers subsidies from state resources via national programmes. Support is focused on projects that cannot be financed from European sources. Its provision is governed by ME Guideline No. 6/2010 on the provision of funds from the State Environmental Fund of the CR, and its appendices.

Support includes a wide range of subsidy titles that are divided into programmes according to Appendices No. I to XVI of ME Guideline No. 6/2010. Their overview is provided in the following table.

Altogether, 9 calls to submit grant applications were declared in 2014. A total of 6 calls was declared in the Joint programme to promote the replacement of boilers based on delegation agreements with individual regions in 2014 for the Moravian-Silesian region (2 calls), the Ústí nad Labem region, the Hradec Králové region, the Plzeň region and the Central Bohemian region. In November 2014, call IV in the Programme to support convalescent stays for children from areas with worsened air quality and the IX call in the Programme to support environmental education, awareness and counselling were announced. In December 2014, the Greenery in Cities and Their Surroundings Programme was updated to the Support of Residential Greenery Programme and on 22 December 2014, the II call for submitting applications was announced. The

applications in the programmes according to Appendices II, VI and IX were accepted continuously

The registered applications are assessed by the Fund based on environmental and economic indicators, regional opinions, the method and technical level of the solution, according to the criteria specified in appendices to the ME Guideline and numerically expressed. Evaluated applications that comply with the Guideline and meet both general and specific conditions are submitted to the Fund Council for discussion and are recommended for support.

In 2014, 2 844 grant applications were submitted under the national programmes. From that, 2 731 applications have already been approved. In the Programme to support the system for car wreck management (according to Annex VI), grant applications were approved in 2014 for the second half of 2013 and the first half of 2014. The approval of subsidies for the second half of 2014 is expected in the 2nd quarter of 2015 (acceptance ends in January 2015). The largest number of applications, 2 617 in total, was submitted in the joint programme for the replacement of boilers (in accordance with Annex XIII) with an allocation for 2014 of CZK 135 million, which supported the replacement of boilers in the Ústí nad Labem region, the Central Bohemian region, the Plzeň region and the Hradec Králové region.




## National programmes

### Subsidy titles in national programmes in 2014

Appendix number	Programme	Announcement of the call; date of receipt of applications	Number of applications	Number of approved applications	Support amount [thousands of CZK]:
I	Programme to protect the Earth's ozone layer	an unannounced call	0	0	0
II	Programme for supporting the purchase of land in specially-protected territories, their protected areas and significant landscape features	acceptance on an ongoing basis (following the earlier programme 3.1.6, not a standard call)	3	3	26 000
III	The EEA and EC support programme	IX call; 26. 11. 2014 – 27. 2. 2015	0	0	0
IV	Programme to support municipalities located in national park regions	III call; 1. 11. 2013 – 31. 3. 2014	30	29	9 304
V	Programme to support water management activities	an unannounced call	0	0	0
VI	Programme to support the system for car wreck management	continuous acceptance, closed every half year	182	182	26 005
VII	Programme to support the submitters of project proposals from EU funds	the acceptance of applications suspended	0	0	0
VIII	Programme to support species diversity of non-reproductive plants and preservation of their gene sources	suspended	0	0	0
IX	Programme for the winner of the CR Green Ribbon Award – care for greenery and the environment	acceptance on an ongoing basis throughout the year following the award (linked to the earlier programme 3.3, not a standard call)	12	4	1 600
X	Programme to support measures in areas affected by floods in 2010	an unannounced call	0	0	0
XI	Programme to support convalescent stays for children from areas with worsened air quality	IV call; 24. 11. 2014 – 30. 1. 2015	0	0	0
XII	A joint programme between the Moravian-Silesian region and the Ministry of the Environment to promote the exchange of existing hand-filled solid fuel boilers for new low emission coal, biomass or coal and biomass automatic boilers in the Moravian-Silesian Region	The programme replaced by a joint programme to promote the replacement of boilers, (Appendices XIII)	0	0	0
XIII	A joint programme to promote the replacement of boilers	IV MSR call, 2. 1. 2014 – 24. 2. 2014	570	539	29 850
		II UR call; 12. 5. 2014 – 22. 5. 2014	305	295	15 020
		VI KH call, 12. 5. 2014 – 19. 5. 2014	204	191	10 030
		VII PLR call, 26. 5. 2014 – 30. 5. 2014	205	200	10 000
		VIII MSR call, 1. 8. 2014 – 18. 9. 2014	559	531	29 535
		IX CBR call; 8. 9. 2014 – 9. 9. 2014	774	757	41 980
XIV	A rapid financial assistance programme to remove the consequences of floods in 2013	an unannounced call	0	0	0
XV	Programme to support the replacement of boilers in areas affected by floods in 2013	an unannounced call	0	0	0
XVI	Greenery in Cities and Their Surroundings Programme (Support Programme for Residential Greenery)	II call, acceptance of applications 22. 12. 2014 – 31. 3. 2015	0	0	0
<b>Total</b>			<b>2 844</b>	<b>2 731</b>	<b>199 324</b>

## Other administered programmes



The Fund co-financed  
ISPA/CF projects. Since  
the programme's beginning,  
subsidies worth

**CZK 820.3**  
**million** have been paid



## Other administered programmes

### Green Investment Scheme

The Green Investment Scheme (GIS), announced on 7 April 2009, was intended for the general public. The programme supports energy saving measures in family houses and apartment buildings (area A), installations of low-carbon sources fired by biomass, efficient heat pumps and solar collectors (area C), as well as construction that meets the passive energy standard (area B). Grant applications were accepted from 22 April 2009 to 29 October 2010.

Separate ME Guideline No. 7/2010 was published in June 2010, making it possible to draw subsidies from the Green Investment Scheme programme for public sector buildings. Applications were accepted within a single call between 19 July 2010 and 31 August 2010 or until 24 August 2010 respectively.

The administration of applications and subsidy disbursement continued in 2014 both in residential buildings and public sector buildings. The terms of the programme were adjusted to allow for the termination of administration of all applications. For residential buildings, the Minister of the Environment signed amendment No. 7 to ME Guideline No. 9/2009 in December 2014, which allowed the extension of the administration of applications in the area of intervention for residential buildings after the end of 2014 until the settlement of all obligations of the Fund related to the programme. The administration was completed for the majority of applications. For public sector buildings, the Minister signed amendment No. 3 to ME Guideline No. 7/2010 in September 2014, the main contents of which was to extend the duration of the GIS programme in the area of intervention for public sector buildings until the end of 2016.

#### Programme results for residential buildings

In 2014, the acceptance of new applications was no longer allowed, but individual previously-submitted applications were administered and disbursed. A total of 80 696 applications were received in the area of residential buildings, 74 039 applications of which were approved with a total volume of aid equalling CZK 20 252 million. As of 31 December 2014, support was disbursed to a total of 73 994 applications at a total amount of CZK 20 199.9 million.

#### Programme results for public sector buildings

144 grant applications were approved in the area of intervention for public sector buildings. Of them, support was disbursed to a total of 28 applications at a total amount of CZK 68.8 million.

More detailed information about the Green Investment Scheme programme can be found in the GIS Annual Report for 2014.

### New Green Investment Scheme 2013

With regard to the postponement of the announcement of the New Green Investment Scheme programme, it was decided to announce the New Green Investment Scheme programme 2013 in 2013. This programme supported measures to reduce the energy intensity of family houses, the construction of family houses with very low energy consumption and measures leading to the efficient use of energy resources. The programme funding was provided by the SEF CR.

On 13 June 2013, the Minister of the Environment approved ME Guideline No. 9/2013 laying down the basic conditions for the New GIS programme 2013 and the first call for applications with an allocation for CZK 1 billion was announced. The receipt of applications was performed from 12 August to 20 December 2013.

The administration of the applications received in 2013 was performed in 2014. A total of 7 100 grant applications were received in the New GIS 2013. From that, 4 259 applications were approved with a total amount of support of almost CZK 698.4 million. In 2014, 1,592 applications were disbursed with a total amount of CZK 99.2 million.

#### An overview of requests for support according to area of intervention\*

AREA OF INTERVENTION	The number of applications
A.1 - insulation (aid intensity 30%)	1 057
A.2 - insulation (aid intensity 40%)	559
A.3 - insulation (aid intensity 55%)	100
B.1 - construction of FH (level 1)	208
B.2 - construction of FH (level 2)	94
C.1 - source replacement (with insulation)	425
C.2 - source replacement (without insulation)	509
C.3 - solar collectors	2 030
C.4 - recuperation	121
D - support for the project	3 720
E - combination bonus	269
<b>Total sum</b>	<b>9 092</b>

\* Only active applications, not including cancelled or terminated ones; applications may include more requests.

## Other administered programmes

### Large projects funded from the ISPA / Cohesion Fund

Before the accession to the European Union, the Czech Republic had the opportunity to draw funds from the Cohesion Fund through the ISPA (Instrument for Structural Policies for Pre-Accession). On the day of accession to the EU, the right to draw funding from the Cohesion Fund (CF) was also created.

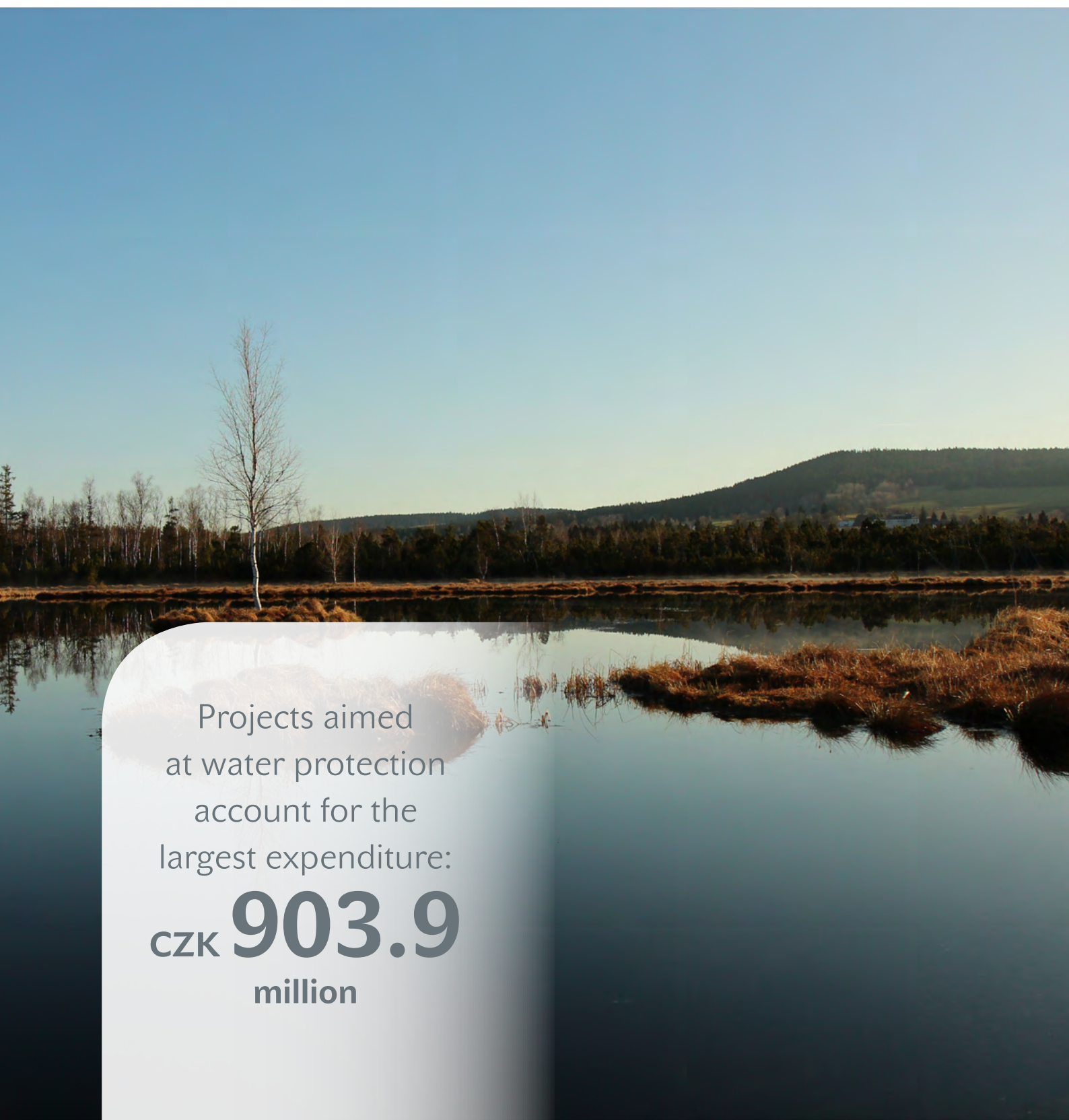
The European Commission approved 40 projects in the ISPA/CF program, the construction of which was already completed by the end of 2012.

In 2014, the European Commission approved the final report for the last Cohesion Fund project and on that basis a final payment of EUR 1.9 million was released to the account of the National Fund of the Ministry of Finance.

The State Fund was not only involved in the preparation and implementation of the ISPA/CF projects, but also co-financed these projects from its own resources. From the beginning of the program to 31 December 2014, the SEF CR reimbursed a total of CZK 820.3 million worth of subsidies (of which CZK 8.1 million was allocated in 2014) and CZK 207.2 million was loans (no loans were released in 2014).



## 03 / FINANCIAL REPORT



Projects aimed  
at water protection  
account for the  
largest expenditure:

**CZK 903.9**  
million

## An overview of the economic situation

In 2014, the Fund fully repaid the loan to the Housing Guaranty Programme (administered by the MUFIS) at a total of CZK 500 million for financial support for projects contributing to protecting and improving the environment in the Czech Republic, which was drawn in 2004.

The Fund ensured a continuous allocation of funds for approved projects in line with the valid internal rules for releasing funds, including covering the operating costs of the Fund's office.

### The Fund's financial balance as of 31 December 2014 (incl. the 2014/2013 index)

	2014 [CZK mil.]	2013 [CZK mil.]	2014/2013 Index
The total initial balance as of 1 January, incl. MUFIS loan and GIS revenues	7 189,0	7 585,1	94,8
The funds in the FKSP account (a – amount is a loss)	–0,3	0,2	x
Creation of balance resources	1 504,8	1 465,4	102,7
Transfers (subsidies) from the SB	312,1	275,3	113,4
Repayment of loans	201,3	222,7	90,4
The Green Investment Scheme (GIS) – revenue from the sale of permits	0,0	0,0	x
<b>Total revenues</b>	<b>2 018,2</b>	<b>1 963,4</b>	<b>102,8</b>
<b>Total resources, incl. GIS</b>	<b>9 206,9</b>	<b>9 548,7</b>	<b>96,4</b>
Use of balance resources			
subsidies (transfers)	1 876,6	1 147,8	163,5
loans	316,9	209,4	151,3
GIS from the Fund's resources	62,1	431,6	14,4
<b>Total</b>	<b>2 255,6</b>	<b>1 788,8</b>	<b>126,1</b>
The Fund's office expenses	572,8	518,5	110,5
interest on MUFIS loan	1,2	2,4	50,0
MUFIS repayment	50,0	50,0	100,0
<b>Total expenditures</b>	<b>2 879,6</b>	<b>2 359,7</b>	<b>122,0</b>
Limit on expenses pursuant to CR Government Resolution No. 590 of 20 July 2011 and GR No. 27 of 11 January 2012 for 2012, for 2013 GR No. 457 of 26 June 2012	4 087,4	4 516,4	x
Difference in expenses and limits pursuant to Government Resolution	1 207,8	2 156,7	x
Difference in resources and expenditures in total	6 327,3	7 189,0	88,0
<b>Balance of financial resources</b>	<b>6 327,3</b>	<b>7 189,0</b>	<b>88,0</b>

### Of the total volume of contracted funds, the following amounts were actually spent as of 31 December 2014:

- CZK 1,876.6 for financial support in the form of transfers (subsidies) (of which CZK 180.1 million was for national programmes, CZK 8.2 million was for ISPA/CF, CZK 99.2 million was for New GIS 2013 and CZK 1,589.1 million was for the OPE),
- CZK 316.9 million for financial support in the form of loans (only the OPE),
- CZK 62.1 million for financial support in the form of the Green Investment Scheme programme transfers (subsidies),
- total: CZK 2 255.6 million.

The total Fund revenues in 2014 were CZK 2.02 billion, total expenses were CZK 2.88 billion (subsidies: CZK 1.88 billion, loans: CZK 0.32 billion, costs of the Fund's Office: CZK 0.62 billion and GIS: CZK 0.06 billion).



## Revenues

Fund revenues consists primarily of payments for pollution or damage to individual components of the environment, the repayment of loans and their interest and subsidies from the state budget to cover expenses incurred from the technical assistance of the European Union programmes for their administration. These revenues do not form part of the state budget of the Czech Republic. From 2009 to 2012, the Fund also received funds from the sale of emission allowances linked to the Green Investment Scheme (GIS).

The use of funds from the Fund is decided by the Minister of the Environment based on recommendations by the Council of the Fund as the advisory body.

### The fulfilment structure of the budget's revenue for 2014 (in mil. CZK)

Budget item	2014 Budget	Revenues as of 31 December 2014	Fulfilment as a %	Difference
Income from fees and fines by environmental components				
Waste water	170,0	209,8	123,4	39,8
Ground water	290,0	359,4	123,9	69,4
Air	300,0	320,1	106,7	20,1
Wastes	30,0	20,4	68,0	-9,6
Packaging	16,0	17,1	106,9	1,1
Car wrecks	300,0	271,5	90,5	-28,5
Nature	260,0	190,0	73,1	-70,0
Penalties and fines	0,0	88,3	x	88,3
<b>Total</b>	<b>1 366,0</b>	<b>1 476,6</b>	<b>108,1</b>	<b>110,6</b>
Interest on loans	13,9	17,0	122,3	3,1
Loan repayments (without loan refunds)	185,2	201,3	108,7	16,1
Revenues from financial settlement	0,0	5,1	x	5,1
Loan refunds from previous years	0,0	0,0	x	0,0
Other revenues	0,0	0,3	x	0,3
Subsidies from the SB (TA)	176,0	312,1	177,3	136,1
Donations	0,0	5,8	x	5,8
Sold and settled receivables	0,0	0,0	x	0,0
<b>The SEF CR total</b>	<b>1 741,1</b>	<b>2 018,2</b>	<b>115,9</b>	<b>277,1</b>

*The revenue part of the budget was met at 115.9 percent as of 31 December 2014.*

## Revenues

### The fulfilment structure of the budget's revenue for 2014 (in mil. CZK)

Year	Fees and other revenues	Repayment of loans	Improving the air programme	Total revenues
1992	2 422,5	0,0	0,0	2 422,5
1993	2 727,4	40,2	0,0	2 767,6
1994	3 287,6	201,5	1 000,0	4 489,1
1995	3 042,5	317,0	1 600,0	4 959,5
1996	2 837,3	516,9	2 000,0	5 354,2
1997	3 060,0	738,6	1 500,0	5 298,6
1998	2 730,1	1 037,0	0,0	3 767,1
1999	2 504,8	1 215,0	0,0	3 719,8
2000	2 154,6	1 346,5	0,0	3 501,1
2001	1 916,6	1 325,1	0,0	3 241,7
2002	2 135,2	1 279,3	0,0	3 414,5
2003	2 151,7	1 043,3	0,0	3 195,0
2004	1 976,2	979,2	0,0	2 955,4
2005	2 017,2	850,5	0,0	2 867,7
2006	1 802,6	752,9	0,0	2 555,5
2007	1 964,3	638,1	0,0	2 602,4
2008	1 871,3	516,0	0,0	2 387,3
2009	2 431,1	393,1	0,0	2 824,2
2010	2 425,8	308,0	0,0	2 733,8
2011	2 130,4	244,0	0,0	2 374,4
2012	1 881,6	212,9	0,0	2 094,5
2013	1 740,7	222,7	0,0	1 963,4
2014	1 816,9	201,3	0,0	2 018,2

*Revenues in 2003 and 2004 are given without the MUFIS loan amounting to CZK 500 million, the revenue for 2008 is given without the subsidy to cover ISPA/CF exchange rate losses amounting to CZK 500 million, the revenues from 2009 to 2012 are given without the GIS revenue amounting to CZK 20 464.44 million.*



## Expenditures

Total financial expenses as of 31 December 2014 amounted to CZK 2 879.6 million. The expenses related to the implementation of water protection projects totalling CZK 903.9 million accounted for the decisive share (31.4%) of total financial expenses.

Projects (from NP, ISPA/CF, OPE, GIS and New GIS 2013 programmes) received a total funding of CZK 2 255.6 million as of 31 December 2014. From that, 14% of the funds provided accounted for expenses related to refundable forms of support (loan) amounting to CZK 316.9 million.

Requirements for transfers (subsidies) amounting to CZK 1 938.7 million, i.e. 86 percent of contractual support, predominated. The expenses related to the implementation of water protection projects in the amount of CZK 903.9 million accounted for the largest share (40.1%) in the structure of total financial expenses.

Since 2004, there has been a spending limit established for the Fund each year. According to Government Resolution, the amount of expenditures set for the Fund in 2014 was CZK 4 087.4 million. This spending limit was not exceeded.

### Expenditure limit status as of 31 December 2014 (in CZK mil.)

Expenditure limit for 2014	Actual expenditures for 2014	Difference
4 087,4	2 879,6	1 207,8

### Expenditures incurred as of 31 December 2014 – structure of expenditures by environmental component (in CZK mil.)

	Transfers (subsidies)	Share as a %	Loan as a %	Share as a %	Total expenditures	Share as a %
<b>water total</b>	<b>612,1</b>	<b>31,6</b>	<b>291,8</b>	<b>92,1</b>	<b>903,9</b>	<b>40,1</b>
from that NP	20,9	1,1	0,0	0,0	20,9	0,9
from that CF	8,1	0,4	0,0	0,0	8,1	0,4
from that OPE	583,1	30,1	291,8	92,1	874,9	38,8
<b>nature total</b>	<b>297,6</b>	<b>15,4</b>	<b>1,3</b>	<b>0,4</b>	<b>298,9</b>	<b>13,3</b>
from that NP	55,0	2,8	0,0	0,0	55	2,4
from that OPE	242,6	12,5	1,3	0,4	243,9	10,8
<b>air total</b>	<b>818,5</b>	<b>42,2</b>	<b>0,0</b>	<b>0,0</b>	<b>818,5</b>	<b>36,3</b>
from that NP	79,0	4,1	0,0	0,0	79	3,5
from that OPE	578,2	29,8	0,0	0,0	578,2	25,6
from that GIS	62,1	3,2	0,0	0,0	62,1	2,8
from that New GIS 2013	99,2	5,1	0,0	0,0	99,2	4,4
<b>wastes</b>	<b>210,5</b>	<b>10,9</b>	<b>23,8</b>	<b>7,5</b>	<b>234,3</b>	<b>10,4</b>
from that NP	25,2	1,3	0,0	0,0	25,2	1,1
from that CF	0,1	0,0	0,0	0,0	0,1	0,0
from that OPE	185,2	9,6	23,8	7,5	209,0	9,3
<b>TOTAL</b>	<b>1 938,7</b>	<b>100,0</b>	<b>316,9</b>	<b>100,0</b>	<b>2 255,6</b>	<b>100,0</b>
from that NP	180,1	9,3	0,0	0,0	180,1	8,0
from that CF	8,2	0,4	0,0	0,0	8,2	0,4
from that OPE	1 589,1	82,0	316,9	100,0	1 906,0	84,5
from that GIS	62,1	3,2	0,0	0,0	62,1	2,8
from that New GIS 2013	99,2	5,1	0,0	0,0	99,2	4,4

*The table does not contain the costs of the Fund's office and of the MUFIS loan.*

## Expenditures

When categorised by region, the greatest amount of Fund resources (without GIS) as of 31 December 2014 went to the Moravian-Silesian Region (CZK 403.1 million), followed by the South Moravian Region (CZK 355 million) and the Central Bohemian Region (CZK 252.4 million).

When categorised by the type of entity, the greatest amount of Fund resources as of 31 December 2014 was provided to municipalities and towns (CZK 973.5 million, i.e. 44.4 percent of the total funds provided). They were followed by business entities – legal persons – with CZK 555.3 million (i.e. 25.2 percent) and public budgets with CZK 253.3 million (i.e. 11.6 percent of the total funds provided).

The costs associated with the Fund's activities (the Fund's office costs) were CZK 624 million. 85% of the eligible costs of the Fund's office to administer the OPE programmes are subsequently paid to the Fund by a subsidy from the state budget. In 2014, the Fund received a SB subsidy to cover administering the OPE in the amount of CZK 298.48 million. The expenses related to the Operational Programme Human Resources and Employment are paid in the same percentage by the Ministry of Interior. The Fund received CZK 13.6 million for these expenses.

Expenditures for administering the New GIS programme are fully reimbursed to the Fund from the state budget through the New GIS - State Costs for administration subprogramme. In 2014, the Fund did not receive any funds to pay for SCA NGIS; the expenses from 2014 will be reimbursed in 2015. The subsidies from the state budget mentioned above are part of the Fund's income.

The Fund's office also pre-funds expenses to administer the GIS and New GIS 2013 programmes, which were fully covered from the GIS in 2014.

CZK 17 million was transferred to the Fund's account and another CZK 45.5 million to the New GIS 2013 TA to cover administration of the Green Investment Scheme in 2014.

The Fund's office expenses also include expenses related to water monitoring pursuant to the Water Act, which totalled CZK 4.8 million in 2014.

## Property

The Fund is a legal entity. The Fund's administrator is the Ministry of the Environment. The management of property is governed by the Act on the Property of the Czech Republic and its Representation in Legal Relations. In 2014, the Fund managed property worth CZK 370.3 million.

Account name	Status as of 31 December 2014 (in mil. CZK)
Fixed assets (tangible, intangible)	180,80
Low-value assets (tangible, intangible)	76,80
Buildings, structures	103,60
Land	9,10
<b>Total</b>	<b>370,30</b>

The Fund has the right to manage the building at Kaplanova Street 1931/1 in Prague 11. Since May 2010, a part of this building has been used by the Agency for Nature Conservation and Landscape Protection (a government organisation unit established by the Ministry of the Environment) based on a loan agreement. According to the agreement and appendices, it contributes to the payment of the building's overhead costs. The Fund took depreciation of CZK 19.8 million for 2014. More information on the financial management of the SEF CR can be found in the 2014 Annual Report on Financial Management of the SEF CR.



## Auditor's report

The subject of verification was the annual financial statement of the State Environmental Fund of the CR for 2014. The audit was carried out by BDO Audit, s.r.o. in accordance with Act No. 254/2000 Coll., on Auditors, and in accordance with ISA International Standards on Auditing and the related application guidance by the Chamber of Auditors of the Czech Republic. The auditor issued an opinion without any reservations.





## 04 / HUMAN RESOURCES



The average  
**number**  
**of employees**  
between January  
and February 2014 was

**574**



As of 31 December 2014, 560 employees worked for the SEF CR. The average number of employees for the period from January to December 2014 was 547. This number includes only those employees who have a concluded employment contract. Agreements to perform a job and agreements to work are not included.

The average gross monthly pay for a SEF CR employee in 2014 was CZK 31,302, according to payroll records.

## Management of Fund (state as of 31 December 2014)

Ing. Petr Valdman	Director of the SEF CR
Bc. Martina Zavadilová	Deputy, Organisational-Legal Department
Mgr. Leo Steiner	Deputy, Other Programmes' Management Department
Mgr. Martin Kubica	Deputy, OPE Management Department
Ing. Pavel Jakobe	Deputy, Economic Department

## Fund Council

The SEF Council is an advisory body to the Minister of the Environment. Its task is to discuss the fundamental questions of creation and use of the Fund's financial resources. The members of the Board and its chairman are appointed and dismissed by the Minister of the Environment

In 2014, the Minister appointed new members from among representatives of the legislative body of the Czech Republic and central government authorities. In 2014, there were 5 regular meetings of the SEF CR Council. Also, there were two per rollam votes concerning the adoption of a resolution outside the Fund's Council.

### Chairman of the SEF CR Council (state as of 31 December 2014)

Ladislav Okleštěk	Chamber of Deputies, Committee for Public Administration and Regional Development
-------------------	---

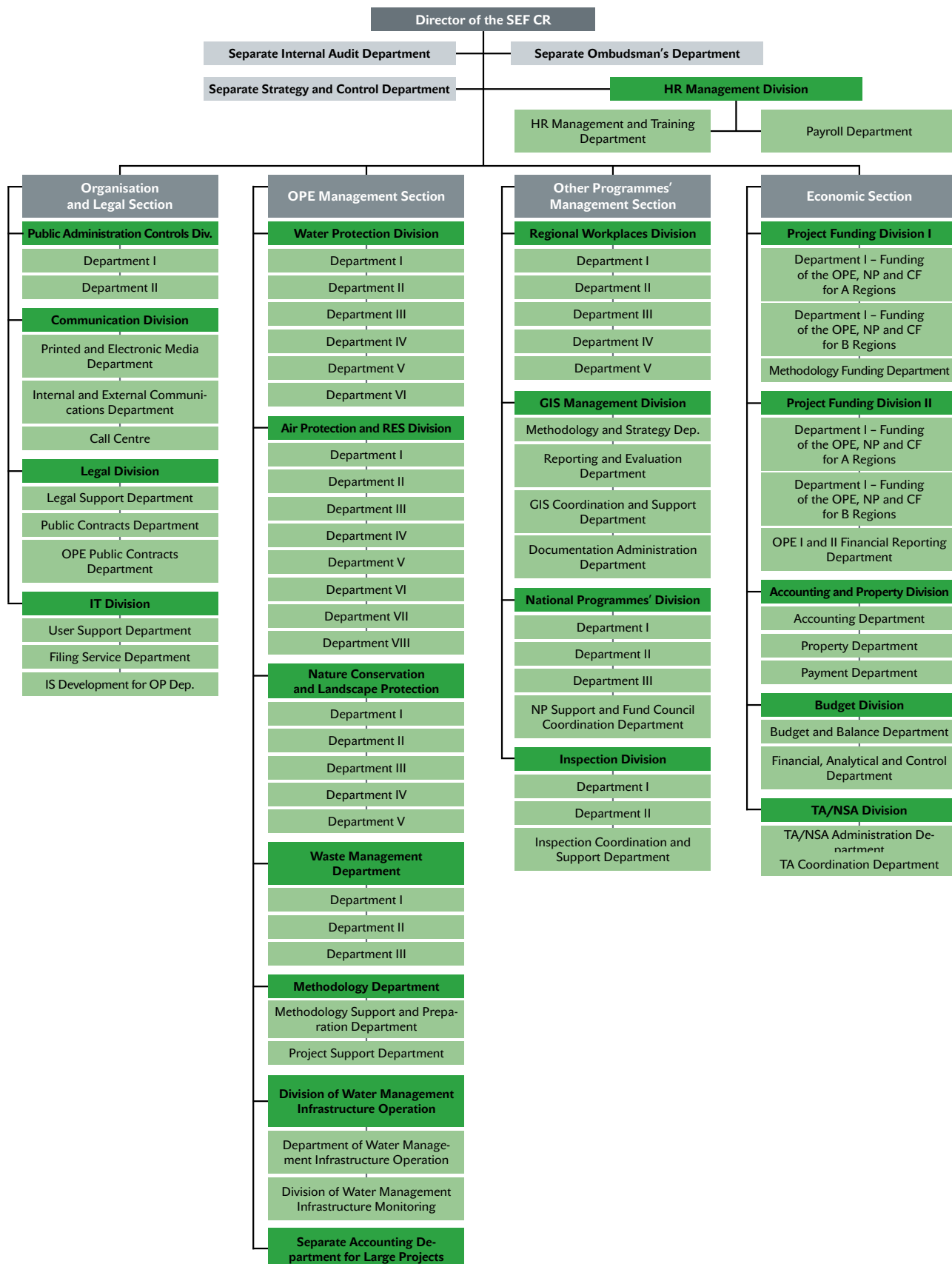
### Members of the SEF CR Council (state as of 31 December 2014)

Ing. Josef Hájek	Chamber of Deputies, Committee for the Environment
Ing. Jaroslav Holík	Chamber of Deputies, Committee for the Environment
RSDr. Josef Někl	Chamber of Deputies, Committee for the Environment
Ing. Ladislav Šinčl	Chamber of Deputies, Committee for the Environment
Ing. Josef Uhlík	Chamber of Deputies, the Committee for Public Administration and Regional Development
RNDr. Jan Zahradník	Chamber of Deputies, Committee for the Environment
Ing. Václav Zemek	Chamber of Deputies, Committee for the Environment
Ing. Ivo Bárek	Senate, Committee for Territorial Development, Public Administration and Environment
RNDr. Miloš Vystrčil	Senate, Committee for Territorial Development, Public Administration and Environment
Ing. Jan Kříž	The Ministry of the Environment
Ing. Jiří Vaníček	The Ministry of Finance of the CR
Ing. Pavlína Kulhánková	The Ministry of Industry and Trade of the CR
Ing. Petr Smrček	The Ministry for Regional Development
Ing. Dan Jiránek	Association of Towns and Municipalities of the CR
Mgr. Daniel Havlík	Association of Regions of the CR
RNDr. Libor Ambrozek	The Czech Union for Nature Conservation

### Observer

Ing. Miroslava Burešová	The Ministry of Finance of the CR
-------------------------	-----------------------------------

## Organizational structure of the SEF CR



## The professional development

The SEF CR places emphasis on the professional qualifications of its employees. Therefore, in 2014 the Fund also provided training and courses to its staff, both in e-learning and attendance form. For the training of staff, it drew resources from the technical assistance of the Operational Programme Environment, Green Investment Scheme and OP HRE projects.

In 2014, SEF CR employees participated in 527 various courses and seminars. Of these, 449 were vocational trainings, 65 information technology trainings, and 13 people were trained in the fields of presentation, communication and management skills. Language courses were attended by 325 employees who could choose between English, German and French.

### Classification of employees according to age as of 31 December 2014

Age group	Men*	Women*	Total*	%
up to 30 years	55	117	172	31
31–40 years	111	108	219	39
41–50 years	20	43	63	11
51–60 years	35	48	83	15
more than 60 years	14	9	23	4
<b>Total</b>	<b>235</b>	<b>325</b>	<b>560</b>	
Total as a %	42	58	100	100

*\* The average recalculated number for the period from January to December 2014.*

## Trade unions

There are two trade unions in the Fund. The Trade Union of the State Environmental Fund, chaired by Michal Tomáš, has been operating in the Fund since September 2011. The Trade Union of SEF Employees, chaired by Jan Matějka, was established in March 2012. In June 2013, representatives from trade unions signed a collective agreement with the Fund management for an indefinite period.



## 05 / THE PROVISION OF INFORMATION



The total  
number  
of **requests**  
for information  
was

**74**



In 2014, the SEF CR recorded and addressed seventy-four requests for the provision of information delivered in writing pursuant to Act No. 106/1999 Coll. Oral requests and answers to them are not recorded pursuant to law.

### Information required under Act No. 106/1999 Coll.

- The number of submitted requests for information: 74
- The number of issued decisions to deny requests: 25
- The number of submitted appeals against decisions: 12
- Transcripts of significant parts of each court decision in cases reviewing the lawfulness of a decision to deny a request for information issued by an obliged entity and an overview of all expenses that the obliged entity had to spend in relation to the court proceedings on rights and obligations under the above act, including any costs with regard to its own employees and the cost of legal representation: 0
- A list of provided exclusive licences, including the justification of the necessity to grant an exclusive licence: 0
- The number of complaints filed under Section 16a: 4

### The SEF CR received four complaints concerning the procedure for addressing a request for information.

The first complaint was filed by an applicant who was not provided with information within the 15-day period from receipt of its request pursuant to Section 14 (5) d) of Act No. 106/1999 Coll. The SEF CR accommodated the complaint by subsequently providing the required information in line with Section 16 a) (5) of Act No. 106/1999 Coll.

The subject matter of the second complaint was the failure to provide information within the 15-day period from receipt of its request pursuant to Section 14 (5) d) of Act No. 106/1999 Coll. and the scope of received information. The SEF CR accommodated the complaint by subsequently providing the required information in line with Section 16 a) (5) of Act No. 106/1999 Coll.

The third complaint was filed by an applicant to whom the SEF CR responded with communication that the request had been postponed. The complaint was referred to a superior authority, the Ministry of the Environment; following the provisions of Section 16a (6) of Act No. 106/1999 Coll., the Ministry ordered the SEF CR to provide the required information and the SEF CR provided the information.

The fourth complaint was filed by an applicant who did not receive information within the 15-day period after receipt of its request pursuant to Section 14 (5) d) of Act No. 106/1999 Coll. The SEF CR accommodated the fourth complaint by subsequently providing the required information in line with Section 16 a) (5) of Act No. 106/1999 Coll.

## 06 / CONTACTS

### SEF CR

Kaplanova 1931/1  
148 00 Prague 11 – Chodov  
Phone: 267 994 300  
Fax: 272 936 597

**Correspondence address**  
Olbrachtova 2006/9  
140 00 Praha 4

**www.sfzp.cz**  
E-mail: [dotazy@sfzp.cz](mailto:dotazy@sfzp.cz)  
Infoline for applicants: 800 260 500

### Contacts to regional offices

#### THE SOUTH BOHEMIAN REGION

Mánesova 3a  
371 03 ČESKÉ BUDĚJOVICE  
tel.: 387 203 857, 386 351 995

#### THE SOUTH MORAVIAN REGION

Kotlářská 51  
602 00 BRNO  
tel.: 541 217 097, 541 217 098

#### THE KARLOVY VARY REGION

Majakovského 707/29  
360 05 KARLOVY VARY  
tel.: 359 807200, 359 807 202

#### THE HRADEC KRÁLOVÉ REGION

Třída ČSA 383  
500 03 HRADEC KRÁLOVÉ  
tel.: 495 436 360, 495 436 361

#### THE LIBEREC REGION

Voroněžská 144  
460 01 LIBEREC  
tel.: 485 101 740, 485 102 041

#### THE MORAVIAN-SILESIA REGION

Československá 7  
702 00 OSTRAVA 2  
tel.: 595 198 440, 595 198 434

#### THE OLOMOUC REGION

Wellnerova 7  
779 00 OLOMOUC  
tel.: 585 244 616, 585 203 855

#### THE PARDUBICE REGION

Pernerova 168  
(budova Chemingu)  
530 02 PARDUBICE  
tel.: 466 924 858, 466 260 725

#### THE PLZEŇ REGION

Kopeckého sady 11  
306 32 PLZEŇ  
tel.: 378 033 909, 378 033 911

#### PRAGUE

Olbrachtova 2006/9  
140 00 PRAHA 4  
tel.: 267 994 572, 267 994 350

#### THE CENTRAL BOHEMIAN REGION – Prague

Olbrachtova 2006/9  
140 00 PRAHA 4  
tel.: 267 994 512, 267 994 416

#### THE ÚSTÍ NAD LABEM REGION

Mírové náměstí 3129/36  
400 01 ÚSTÍ NAD LABEM  
tel.: 475 205 598, 475 207 448

#### THE VYSOČINA REGION

Havlíčková 111  
586 02 JIHLAVA  
tel.: 567 213 855, 565 659 261

#### THE ZLÍN REGION

Budova 51, J. A. Bati 5645  
760 01 ZLÍN  
tel.: 577 522 274, 577 222 762



## 07 / LIST OF ABBREVIATIONS

<b>AAU</b>	Assigned Amount Unit
<b>WWTP</b>	Wastewater Treatment Plant
<b>Commission</b>	The European Commission
<b>ERDF</b>	European Regional Development Funds
<b>EU</b>	The European Union
<b>EEA and EC</b>	Environmental education and awareness and environmental counselling
<b>CF</b>	The Cohesion Fund
<b>GIS</b>	The Green Investment Scheme
<b>CHOPAV</b>	protected area of natural water accumulation
<b>IS</b>	information system
<b>ISPA</b>	Instrument for Structural Policies for Pre-accession
<b>MF CR</b>	The Ministry of Finance of the Czech Republic
<b>MSR</b>	The Moravian-Silesian Region
<b>MUFIS</b>	Municipální finanční společnost, a. s.
<b>ME</b>	The Ministry of the Environment
<b>NER</b>	New Entrants Reserve (instrument for financing low-carbon technologies in the EU)
<b>NP</b>	national programmes
<b>SCA NGIS</b>	State costs for administering the New Green Investment programme
<b>New GIS</b>	The New Green Investment Scheme
<b>OP</b>	Operational Programme
<b>OPI</b>	The Operational Programme Infrastructure
<b>OP HRE</b>	The Operational Programme Human Resources and Employment
<b>OPE</b>	Operational Programme Environment
<b>PO</b>	Priority Axis
<b>MA</b>	Managing Authority
<b>SEF CR</b>	The State Environmental Fund of the CR
<b>SB</b>	state budget
<b>CBR</b>	The Central Bohemia Region
<b>TA</b>	Technical Assistance
<b>UR</b>	The Ústí nad Labem Region
<b>WSaS</b>	Water supply and sewerage
<b>LP</b>	large projects
<b>E</b>	Environment





Published by: **The State Environmental Fund  
of the Czech Republic**  
Olbrachtova 2006/9  
140 00 Prague 4

Date of publication: June 2016

Photographs: Archives of the SEF CR